



KONICA MINOLTA

# bizhub 754e/654e



FOR DOCUMENT WORKFLOW AND MANAGEMENT PRODUCTIVITY



The bizhub 754e series proudly joins the bizhub family – named 2013 A3 MFP Product Line of the Year by Buyers Laboratory LLC.

# IT ALL BEGINS WITH BIZHUB

## FAST THROUGHPUT WITH SIMPLE TOUCHSCREEN CONTROL

The bizhub 754e/654e represent a total-system approach to growing your business: managing documents, simplifying processes and streamlining workflow. Innovative bizhub technology lets you print, copy, scan and fax faster – capturing data, sharing information and integrating business-critical software with seamless ease. Konica Minolta also helps you take control of your costs: optimizing efficiency, monitoring usage, managing your IT infrastructure and enhancing security to comply with new regulations. In general business as well as specialized legal, educational, healthcare and other applications, count on Konica Minolta to make you more productive.

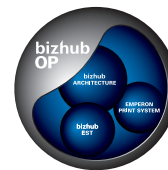


INFO-Palette design incorporates greater convenience for every employee and enhanced panel operation supports new tablet-like gesture operations for navigation. You can drag, drop, pinch in and pinch out, rotate images and bring up any menu you want with a quick flick of your finger across the screen.



### Fast, high-quality B&W printing and color scanning.

For everyday B&W document demands, the bizhub 754e and 654e are built for speed: print/copy output up to 75 ppm (754e) and 65 ppm (654e), standard dual scanning at up to 180 originals per minute, even color scanning to digitize both B&W and color originals and bring them into your workflow faster.



Our exclusive bizhub OP (Open Platform) technology provides fast internal processing with a consistent control interface to make even first-time users more productive. The built-in Imperon®

print system incorporates PCL6/PS3 emulation and native XPS functionality – with universal printer drivers to manage print output using standard, familiar commands. You can even print from thumb drives with a convenient front-panel USB connector. And Scan-to-USB offers an easy way to convert paper documents to digital files without burdening your IT resources.

Scanning to multiple destinations saves time and reduces misfiled documents that compromise your productivity. The bizhub 754e and 654e let you scan directly to Email, FTP, and SMB with simple commands on your bizhub touchscreen panel. You can scan to user boxes for individuals, departments, workgroups, even projects. Scan-to-Me and Scan-to-Home enable scanned images to be sent seamlessly to your existing network repositories for greater convenience and confidentiality. TWAIN scanning from PCs provides a smooth interface with industry-standard scanning solutions for legal, educational and healthcare environments – and PageScope® Mobile App lets you send scanned data to mobile devices for managers and professionals on the road or at off-site meetings, client presentations and branch locations.

Optional Super G3 Fax Kits expand your horizons with high-volume speed, broadcasting functions and support for up to four fax lines. You can select from a wide range of scan formats, including PDF, Compact PDF, Searchable PDF, PDF/A, DOCX, PPTX, XLSX, TIFF, JPEG, and XPS (some formats are optional). WebDAV support lets you manage server files and folders, Gigabit Ethernet processing improves network traffic, and Distributed Scan function can automate your workflow by sending documents directly to a “Scan Server” set up with customized instructions.



With two models to choose from, the bizhub 754e series can provide the right document solution for any size business.

### A touchscreen that's as easy as a familiar tablet.

Such powerful printing, scanning and distribution capabilities deserve an equally sophisticated control system – and the large 9" color touchscreen of the bizhub 754e and 654e provide simple, intuitive operation of print, copy, scan and fax operations as well as direct on-screen control of 3rd-party software. You can drag, drop, pinch in and pinch out, rotate images and more. You can bring up the menu you want with a quick flick of your finger across the screen.

Transparent menus, customizable icons and soft keyboards are augmented by electrostatic keys and sound settings for a “hands-on” touch and feel. The bizhub 754e and 654e even give you thumbnail preview capability to check files before you print – a sure way to reduce errors that waste paper and slow down your output.

PageScope Enterprise Suite version 3 enables you to securely authenticate users, provides secure print release from anywhere on your network, and allows you to restrict or limit access to specific functions. Enhancements to this powerful multi-settings feature incorporate the ability to import/export pre-defined templates, including commonly used network settings, eco-friendly settings, and automatic MFP registration and remote firmware update capabilities that can be scheduled during non-business hours.

PageScope Net Care Device Manager allows users or administrators to check operating status right from their local browser. Administrators can also configure multiple bizhub units from a single point, to simplify IT administration. PageScope Print Status Notifier provides automatic alerts to speed your workflow. PageScope Data Administrator handles one-touch addresses, users and accounts for easy access and updates.

### Versatile paper handling and modular finishing options.

To handle all your B&W print/copy needs, the bizhub 754e/654e can handle a wide range of paper sizes and weights – reproducing up to 11" x 17" originals on oversized sheets to preserve margins and crop marks. Tab Printing support lets you print tabbed pages from the multiple bypass tray and use interleave function to insert tabs within the body of your document – great for human resource packets, legal or educational binders and training or instruction manuals.

You'll have four standard paper drawers for 3,650-sheet capacity, which increases to 6,650 sheets when you add the Large Capacity Cassette. Duplex printing at full rated print speeds of 75 sheets per minute (754e) and 65 sheets per minute (654e) allows users to save paper by printing two-sided pages without compromising productivity.

The bizhub 754e/654e also provides fast, cost-effective in-house printing on demand with modular, scalable finishing options. A 100-sheet staple finisher performs 3-position stapling, custom sorting and grouping. There's a compact 50-sheet staple finisher for 3-position stapling and electronic sorting – and a second 50-sheet stapling option provides a saddle-stitcher for booklet making. You can also add options for hole punching, folding, post-insertion and more – everything your business needs to get the job done.



The bizhub 754e and bizhub 654e offer an unsurpassed array of scanning and finishing features and benefits to bring information into your workflow with greater speed and flexibility.





# WE'RE IN THE BUSINESS OF SOLUTIONS

WITH MORE EFFICIENT WORKFLOW INTEGRATED INTO YOUR BIZHUB TOUCHSCREEN

The bizhub 754e and 654e incorporate solutions right at the machine with award-winning control panel operation, plus integrated software solutions to handle the challenges of general business as well as specialized professional environments. Konica Minolta expertise is hard at work solving problems for thousands of customers in the legal, educational, healthcare, finance and government markets, integrating bizhub document output with industry-standard software for total-system productivity with single-source reliability.

EnvisionIT: our total, end-to-end approach to general business as well as legal, educational and healthcare demands. EnvisionIT combines intelligent design, enhanced performance and proven reliability in a powerful vision that speeds your output and improves workflow while reducing your costs.

**Every application has its own unique challenges.**

For business and corporate applications, managing information and controlling costs can be the key to higher profits. But for specialized professional applications, the questions can be more complex. For healthcare providers, do MFPS integrate with your back-end EHR systems so patient records can be easily accessed, scanned and printed? For legal providers, are documents searchable and easily annotated – and do attorneys have access to case files through mobile devices?

For educators at a time of rising costs and shrinking state and local budgets, the challenge is doing more with less – managing student records with greater speed, simplifying the process of testing and grading, recovering costs by charging for prints and copies, and improving campus-wide and system-wide security.



**EnvisionIT: proven expertise with seamless software integration.**

Whatever industry you're in, Konica Minolta's EnvisionIT initiative answers these mission-critical questions with specific benefits that address professional needs.

In healthcare, for example, Konica Minolta is the provider of choice for over 8,000 facilities across the nation – combining the intelligence of the bizhub MFP design with more efficient ways to digitize and share patient records, increase security compliance to meet HIPAA and AARA/HITECH mandates, and reduce operating costs by managing document workflows more efficiently.

For legal applications, the bizhub 754e/654e provide a seamless interface with industry standard software for managing case files and preparing information for ECM or eDiscovery offerings. Konica Minolta's own Dispatcher Phoenix Legal software, for instance, can streamline processes such as Bates Stamping, redaction and PDF/A conversion. We are a trusted provider to over 5,000 law firms in the U.S., serving document and IT management needs with document management and cloud-based solutions that control costs and protect attorney-client confidentiality.

In K-12 school districts as well as colleges and universities, Konica Minolta EnvisionIT Education solutions help improve student performance, increase teacher efficiency and make administrative procedures more cost-efficient to stretch limited budgets. Our solutions include cost recovery, grading and analytics, all fully integrated with advanced printing and scanning solutions for preparing course content, safeguarding student records and protecting the environment.



**Solutions to serve corporate and commercial demands.**

Konica Minolta brings specialized expertise to solve problems specific to your industry, addressing improvements in productivity, cost reduction, marketing communications, corporate central reproduction departments and in-house printing environments.

Driving this seamless hardware/software integration is our exclusive bizhub Extended Solution Technology (bEST), which enables time- and cost-saving solutions to be controlled directly from your bizhub 754e/654e touchscreen panel. Document workflow solutions can be easily implemented and controlled directly at the machine, enabling first-time and temporary personnel to achieve the higher productivity your business needs.

The digital printing capability and modular finishing options of the bizhub 754e and 654e also help you personalize communications for greater impact using variable data solutions that strengthen customer relationships and improve response rates. You can also create cost-effective electronic forms that save storage space and can be reprinted and updated more quickly at less cost.

To speed the flow of information, you have the benefit of a Microsoft SharePoint Server connection for printing from servers as well as PageScope Mobile printing from mobile devices. You can also take advantage of cloud services like Google, SharePoint and Office 365 for off-site storage of documents and programs.



**On-screen apps and i-Options to improve your productivity.**

The bizhub 754e and 654e give you another exclusive Konica Minolta advantage: downloadable apps\* that help you work faster and smarter. They're available on the bizhub MarketPlace, your source for specialized applications you can install, view and control on your bizhub touchscreen.

You'll have access to apps such as the Announcement App, to help you spread the word consistently and cost-efficiently throughout your organization. With other simple-to-use apps, you can scan files directly to Google Mail, Google Drive and SharePoint, verify bizhub SECURE settings with on-screen indicators for peace of mind, and print certificates and paper templates right from the control panel.

In addition to downloadable apps, Konica Minolta's i-Option Kits increase the power of your bizhub 754e and 654e with the specialized functions your business needs. LK-101 v3 gives you access to the Internet from your bizhub MFP control panel. LK-102 v3 combines PDF/A (1a/1b) formatting, Linearized PDF support, AES 128-bit PDF encryption and Digital IDs, signatures and passwords to meet demanding security standards. You can add LK-104 v3 for Voice Guidance operation, LK-105 v3 to create Searchable PDF files and locate specific text references, and LK-106, 107 and 108 for Bar Code Font, Unicode Font and OCR Font support.

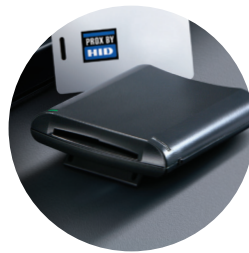
The new LK-110 i-Option kit lets you create or convert documents to the various Microsoft Office Open XML file formats you need and incorporates LK-102 v3 and LK-105 v3 functionality. And LK-111 provides ThinPrint support – enabling the bizhub 754e/654e to print in ThinPrint environments without additional hardware.

\*Not available at time of launch. Options required.

# INTELLIGENT SYSTEM SOLUTIONS

## TO CONTROL YOUR COSTS AND GROW YOUR BUSINESS

How can Konica Minolta help your business keep ahead of the competition? With bizhub 754e and 654e, you'll have superior performance, scalable options and a superior array of value-added services to help you achieve your business goals – improving document workflow, recovering costs, managing and safeguarding essential data, optimizing your printing to save time and money, even managing your IT infrastructure without adding extra personnel to your payroll.



The bizhub 754e and 654e offer a full array of standard safeguards as well as advanced options like Biometric Authentication, HID Proximity Cards, and other powerful options to guard your bizhub from unauthorized use.

### Enhanced security to protect documents and devices.


To protect sensitive information in the digital networked era, both the bizhub 754e and 654e are designed to meet strict ISO 15408 and IEEE 2600.1 security standards (in evaluation). They offer corporate and professional users a comprehensive array of standard safeguards as well as advanced security options like Biometric Authentication, input for HID IC Cards, Magnetic Stripe Cards and support for CAC/PIV Card\* systems for the U.S. Federal Government.



Encrypted PDF workflow protects information passing from PCs to your networked bizhub MFP. IP filtering registers IP addresses of the PCs on your network. An optional Copy Guard system requires password access to make copies. And the bizhub 754e/654e also provide the lock-down confidence of bizhub SECURE: powerful safeguards to prevent unauthorized operation, all built-in and activated by your Konica Minolta service provider.

HDD Lock applies password protection to your bizhub 250 GB hard disk drive. The Job Erase function automatically overwrites your HDD up to three times every time a job is performed. When you move your bizhub device to another location, HDD Sanitizing can overwrite data in eight different modes so sensitive information will not be compromised. These comprehensive overwrite methods meet United States DoD, NSA and other international standards.

\*Not available at time of launch. Options required.



With years of experience, our professional IT services team has helped thousands of businesses take control of their IT environment without increasing their payroll.



With Konica Minolta as your IT partner, you'll have peace of mind knowing that your network environment is secure and stable.

#### The cost-effective Konica Minolta approach to IT management.

In every business and profession, the rising cost of IT management is a growing concern. Konica Minolta can help you take command of your IT administration in a wide array of key areas: improving network performance, enhancing security procedures, managing your computers and servers, maintaining your system with remote diagnosis and on-site service.

We can also support your migration to the cloud-based services that will drive future growth – increasing your uptime performance, maintaining continuity of services, and improving cost-performance due to outsourcing your IT infrastructure. In fact, we can help you coordinate and execute a total IT strategy for increasing the value of your document workflow processes – including immediate data backup, storage and retrieval of business documents, email messages, proposals, invoices, compliance paperwork and more.

With years of experience, our professional IT services team has helped thousands of businesses take control of their IT environment without increasing their payroll. As a one-point source for managing change and measuring results, we can provide a scalable, end-to-end solution customized for your specific business needs – a solution that frees you to concentrate on achieving your business and professional goals in confidence that your IT needs are in expert hands.

#### Leverage the power of OPS to make your print infrastructure work more efficiently.

Konica Minolta's Optimized Print Services (OPS) program combines consulting, hardware and software implementation with workflow management, automated services and supplies – all to lower your costs and improve the efficiency of your workflow.

Our OPS initiative links three essential business functions: consulting, implementation, and management. With this comprehensive approach, Konica Minolta



provides continuous OPS services that focus on fleet, process, finance, security

and green initiatives. Our OPS solution uses advanced metrics to analyze your current print environment, right-size your fleet, visualize your workflow and improve print processes – even modify employee behavior to save energy, reduce waste and choose the most economical output devices and formatting options.

# 40%

REDUCTION IN IT HELP DESK CALLS

# 25%

SAVINGS IN CONSUMABLES

# 23%

OVERALL DOCUMENT COST REDUCTIONS

# FOR ALL YOUR DOCUMENT NEEDS

COUNT ON KONICA MINOLTA.

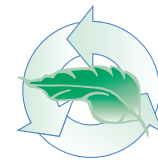
Konica Minolta Business Solutions U.S.A., Inc. is a leader in advanced document management technologies and IT Services. The company focuses on complete business solutions including production print systems, digital presses, multifunctional products (MFPs), managed print services, vertical application solutions and related services and supplies. We are proud of our record of achievement – and we invite you to learn first-hand why you can always count on Konica Minolta. For more information, please visit: [www.CountOnKonicaMinolta.com](http://www.CountOnKonicaMinolta.com)

## Innovations to improve access, reduce costs and protect the environment.

At Konica Minolta, we develop products from the ground up for Section 508 compliance: accessibility for everyone, regardless of age, gender, stature of special needs, and usability by all, with comfortable and intuitive operation. The touchscreen control panel of the bizhub 754e/654e tilts for greater visibility from any angle. Control LEDs and icons are brighter and easier to understand. Paper drawers open from the front with smooth-sliding action. Toner is easy to change without interrupting your print run.

The bizhub 754e/654e are EPEAT-Gold Certified and achieve among of the lowest power consumption rates of any MFPs in their class. Our unique Eco-indicator enables you to monitor paper, toner and energy usage by device, account or end-user to promote greater cost-consciousness. And with built-in PageScope software, it's easier to make fleet-wide settings to ensure that every MFP operates with optimum energy efficiency.

Our Clean Planet program also makes recycling quick, simple and cost-free for all your Konica Minolta



consumables: toner cartridges, imaging units, waste toner bottles, developer and drums. We provide free return cartons and postpaid UPS labels that make the recycling process easier than ever. For mid-sized customers, Konica Minolta can provide recycling boxes designed to hold 10-15 consumable items. For high-volume users, delivery and pickup arrangements can be made for bulk shipping containers.

Konica Minolta's exclusive Simitri® HD toner formulation uses biomass plant-based materials to reduce environmental impact. And our Eco Vision 2050 project is committed to reducing CO<sub>2</sub> emissions by 80% over 2005 levels – minimizing greenhouse gases that may contribute to global warming.



Konica Minolta has won numerous awards and recognition including being recognized as the #1 Brand for Customer Loyalty in the MFP Office Copier Market by Brand Keys for six years in a row. For the third consecutive year, Buyers Laboratory LLC (BLI) has named Konica Minolta as the winner of its "A3 MFP Line of the Year" award.

In 2012, Konica Minolta also received "Document Imaging Solutions Line of the Year" recognition from BLI. Konica Minolta, Inc. has also been named to the Dow Jones Sustainability World Index for two years in a row in recognition of the company's economic, environmental and social performance.



KONICA MINOLTA

KONICA MINOLTA BUSINESS SOLUTIONS U.S.A., INC.  
100 Williams Drive  
Ramsey, NJ 07446

[www.CountOnKonicaMinolta.com](http://www.CountOnKonicaMinolta.com)  
[www.kmbs.konicaminolta.us](http://www.kmbs.konicaminolta.us)

Konica Minolta Optimized Print Services offers a full suite of device output services and workflow solutions that increase efficiency and control costs. Please contact your authorized Konica Minolta sales representative for details.

© 2013 KONICA MINOLTA BUSINESS SOLUTIONS U.S.A., INC. All rights reserved. Reproduction in whole or in part without written permission is prohibited. Konica Minolta, Count on Konica Minolta, bizhub, Emperon, PageScope and Simitri are trademarks of KONICA MINOLTA, INC. All other brands and product names are registered trademarks or trademarks of their respective owners.

Item #:754EBRO  
10/13