

Multifunction Color

RICOH MP C4504/ MP C6004

✔ Copier ✔ Printer ✔ Facsimile ✔ Scanner



RICOH
imagine. change.

MP C4504

45
ppm

monochrome
and full-color

MP C6004

60
ppm

monochrome
and full-color

Improve productivity in your own way

You take your work personally. Why not use it to your advantage? Use what you know about your everyday tasks to customize digital workflows on the RICOH® MP C4504/MP C6004 Color Multifunction Printer (MFP) with our Workstyle Innovation Technology. Choose from multiple user interfaces for intuitive fingertip control on an oversized 10.1"-wide Super VGA Smart Operation Panel. Create one-touch shortcuts to automate manual tasks. Place your own information-rich widgets on the control panel and check settings and critical details with a single glance. Produce more types of jobs in more formats — including brilliant color prints on a wide range of paper stocks — with speed and convenience without compromising security or wasting resources. Add user authentication to protect information and to encourage more responsible printing. And take advantage of mobile technologies to remain productive from anywhere.

- Print up to 60 color prints/copies per minute
- Use flick, pinch and swipe motions to navigate an interactive user interface
- Customize your own automated workflows to reduce manual tasks
- Use your personal mobile device to print and share information anywhere
- Showcase your work in brilliant colors with professional finishing
- Take advantage of eco-friendly features to lower operating costs and reduce overall environmental impact without sacrificing business productivity



Do it all with speed and convenience

Perform more tasks with fewer hassles

Expedite every task, every day

Decisions have to be made. You might as well ensure they're the right ones by getting information where it needs to be — on time. A built-in motion sensor activates the Smart Operation Panel as you approach, so you can begin working the moment you arrive at the MFP. Print up to 60 pages per minute for incredibly fast turnarounds, even when producing full-color brochures, presentations, spreadsheets and more. Add optional paper trays to extend paper capacity up to 4,700 sheets, and remove paper jams quickly via an animated guide to keep jobs moving. Scan full-color originals and deliver them at breakneck speeds with a host of scan-to capabilities, including access to your LDAP directory for email delivery. Send and receive paperless faxes to ensure contracts, forms and other important documents arrive at the right destination at the right time.



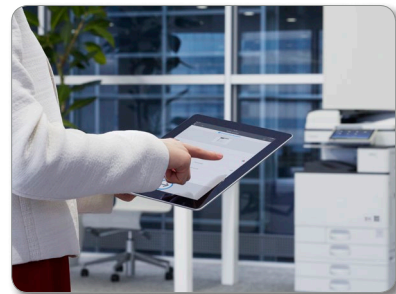
Leave your mark with brilliant colors

Make an unforgettable impression by producing compelling images and documents with densely rich colors for more lifelike reproductions at up to 1200 dpi resolution. The RICOH MP C4504/MP C6004 recalibrates itself as it processes files, which means colors never deteriorate and text and lines stay incredibly sharp page after page. Expand your reach by printing on a wider, thicker range of paper stocks — up to 12" x 18" sizes and 300 gsm/80 lb. Bond. You can even create posters and banners that would normally be reserved for wide-format devices by combining multiple pages into one image. Want to save on outsourcing costs? Choose the new Fiery® E-23C Color Controller and produce spot color professional output using the gamut of RGB, CMYK and PANTONE® colors.



Make your mark from anywhere

With your smartphone or tablet in hand, productivity remains within your grasp. Download the RICOH Smart Device Connector app to connect to the MP C4504/MP C6004 without software, utilities, drivers or delays. Simply touch your mobile device to the MFP's Near Field Communication (NFC) tag to print, scan and share documents, photos and more instantly. Send information to your phone just as easily. Scan originals at the device, deliver them to your smartphone and tablet and take them with you. Use your personal address book to bypass manual entry tasks and send emails to any recipient in a single action. Plus, you can use the dual optional network port to connect to multiple networks simultaneously.





A new way to work is within your reach

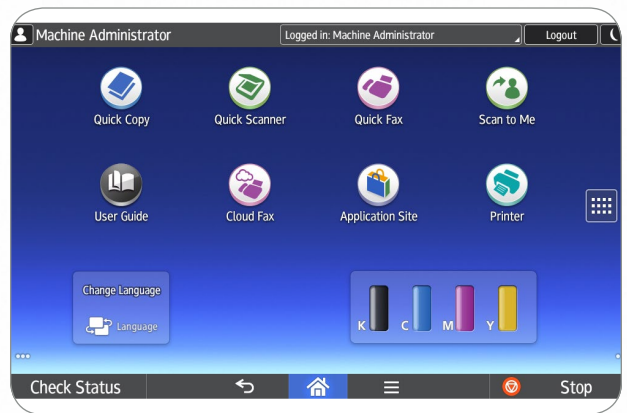
Slide from one job to the next with ease

Searching for ways to be more productive? Look right in front of you, it's at your fingertips with our revolutionary Workstyle Innovation Technology. Use the same motions you use on your smartphone or tablet — including swipe scrolling, drag-and-drop and pinch-and-flick gestures — to toggle between jobs and check settings quickly. Take advantage of the dynamic user interface layout on the oversized 10.1"-wide Super VGA Smart Operation Panel to access information instantly. Because there are no hard keys, you simply tap icons to navigate from one task to the next. The user interface even lets you print, scan, copy and fax using convenient one-touch controls. Don't worry, we didn't forget about what's worked in the past. You can opt to use a touchscreen version of the legacy user interface found on previous Ricoh devices.



Use intuition to work smarter

Decisions are easier when you have the right information. Workstyle Innovation Technology lets you access information at any time. Choose to use the "smart apps" user interface so you can access details quickly and intuitively with a single glance. Click on your choice of iconic apps to automate everyday print, copy, scan and fax workflows and reduce time-consuming manual entry that can derail even your best ideas. Check any setting — from the number of prints to scan-to-destinations to finishing options — with a tap of your finger. Need to make changes to settings or workflows? Touch the interactive Smart Operation Panel again to make adjustments in only moments. Looking for more features and functions? Download additional apps from our Application Site and place them as one-touch widgets on the Home Screen.



Customize workflows to simplify information flow

You have a lot of work to do. Who says you have to spend a lot of time doing it? Simplify your workday and deploy workflow applications that streamline business via Ricoh Workstyle Innovation Technology and use what you know about everyday tasks to create unique, customized solutions powered by the Smart Operation Panel. Do you routinely print the same types of spreadsheets? Do you scan and share notes after the weekly meeting? Integrate multiple processes and simplify complex tasks, so you can simply press an icon and complete these tasks faster without repeating steps or recreating the work. You can use the interactive user interface as a one-touch path for special tasks, too. Tap the ID Card Copy icon to scan two-sided identity documents, such as licenses and insurance cards, onto a single-sided document. For more complex workflows, add your choice of plug-and-play workflow software to simplify your workday.



Empower users to work quickly, collectively

Grab and share information automatically

Move information to the right people in the right format quickly. Access up to 3,000 frequently-used documents stored in the Document Server. Use the built-in browser to capture files and images in the Cloud without servers, system integration and software updates. With embedded Optical Character Recognition (OCR) software, you can place keyword-searchable metadata on that information for easier retrieval. Ready to share with others? Scan originals at up to 180 ipm via the 220-Sheet Single Pass Document Feeder and use scan-to capabilities to send digital files to any recipient, anywhere. Or, use Ricoh Device Software Manager to simplify print driver installation and begin using the device in moments. You can also track everything in real time with web-enabled tools, or have Ricoh's knowledgeable support desk staff operate and configure your Smart Operation Panel remotely for faster, better outcomes.



Hold yourself and others accountable

You're responsible for getting company information to the right people. So make certain the right people are sending it. With user authentication, you can track activity for every user, set print quotas, restrict access to specific functions and more. Each user logs in to the MP C4504/MP C6004 by entering a passcode or billing code — or by passing an ID card over an optional NFC card reader at the device. With Locked Print, users can release jobs for printing only when standing at the MFP, which reduces unnecessary printing and helps protect confidential information. You can also place a watermark on specific printed documents if unauthorized users try to recreate them. Take advantage of encryption protection and automatic overwrites to prevent access to information residing on the hard drive.



Plan to save

The MP C4504/MP C6004 is designed specifically to simplify workloads while reducing expenses. Because the MFP meets EPEAT® Gold criteria* and ENERGY STAR® certifications, you can realize incredibly low Typical Electricity Consumption (TEC) rates — as low as 1.8 kWh/week. Use duplex printing as the default to reduce paper costs. Program the MFP to power down automatically when you know the office will be empty. And use the Eco-Friendly widget to send users hints and tips for conserving energy. You can even track how much energy you're saving. The system is also equipped with an innovative motion sensor, which senses an approaching user by detecting the differences in body temperature versus the surrounding environment. The system will awake from Sleep Mode and turn on the operation panel within one second so it is ready to begin job programming by the time the user arrives at the machine.



*EPEAT Gold rating is applicable only in the USA.

To view detailed features of our multifunction products online go to www.ricoh-usa.com/products

Perform more jobs with fewer hassles



- 1 Smart Operation Panel:** Choose from multiple intuitive user interfaces to customize and automate workflows on the 10.1"-wide Super VGA Smart Operation Panel. Create iconic shortcuts. Add convenient widgets. And access information with one-touch control using the same motions you use on your smartphone or tablet.
- 2 220-Sheet Single Pass Document Feeder (SPDF):** Feed color and black-and-white documents with high-speed copying and scanning in a single pass.
- 3 User authentication:** Monitor the activity for every MFP user with personal passcodes or billing codes. Or, with embedded Near Field Communication (NFC) technology and an optional NFC Card Reader, you can require users to gain access via proximity card.
- 4 Paper Trays (Standard):** With two 550-Sheet Paper Trays, one of which can accommodate paper sizes up to 12" x 18", you can produce more jobs with fewer reloads.
- 5 100-Sheet Bypass Tray:** Accommodate a wider range of paper stocks — from envelopes to 12.6" x 49.6" banner sizes — to impress audiences with versatile output. Add an optional Banner Paper Guide Tray for convenient, affordable banner printing.
- 6 Document Server:** Create up to 200 shared or passcode-protected personal folders to store up to 3,000 frequently used digital documents on the MFP's hard drive.
- 7 Tandem Large Capacity Trays (Optional):** Extend runs for 8.5" x 11" paper sizes with two 1,000-Sheet Paper Trays.
- 8 1,500-Sheet Side Large Capacity Tray (Optional):** Minimize interruptions by adding up to an additional 1,500 sheets of letter-sized paper.
- 9 125-Sheet One Bin Tray (Optional):** Separate output quickly for easier retrieval when printing multiple jobs.
- 10 2,000-Sheet External Booklet Finisher:** Produce up to 20-sheet saddle-stitched booklets cost-effectively. Available with an optional Hole Punch Unit.
- 11 Dual Network Support (Optional):** Connect to multiple networks simultaneously via the additional network interface port.
- 12 Web Browser:** Use the built-in web browser on the MFP touch panel to search for web pages.
- 13 Motion Sensor:** Senses approaching users and awakens the MFP from Sleep Mode so it is ready by the time the user arrives at the machine.

Put it all together at the end

Bring your best ideas together by finishing them in style. With the External Hybrid Stapleless + Stapler Finisher, you can conserve resources by getting rid of staples entirely for document sets of 2 to 5 pages. For document sets from 6 to 50 pages, the finisher can automatically convert to staples. It is ideal for educational, manufacturing and healthcare environments.

You can choose other finishing options, too. Each is specifically designed to simplify paper handling, stacking and stapling, so you can concentrate on other core tasks. Choose the one that meets your unique requirements and give your projects an affordable, impressive professional-grade look.



Finisher	Paper Capacity (LT)	Hole-Punch	Saddle Stitch	Stapleless
SR3130 Internal	500 Sheets	Option	N/A	N/A
SR3210 External	1,000 Sheets	Option	N/A	Stapleless – Up to 5 Sheets Stapled – Up to 50 Sheets LTR
SR3220 External	1,000 Sheets	Option	Up to 15 Sheets	N/A
SR3240 External	2,000 Sheets	Option	Up to 20 Sheets	N/A
SR3230 External	3,000 Sheets	Option	N/A	N/A

*Not available for MP C6004

General Specifications

Configuration	Desktop
Printing Process	4-Drum Method
Output Speed (Copy/Print)	MP C4504: 45-ppm B&W & FC (LTR) MP C6004: 60-ppm B&W & FC (LTR)
Warm-Up Time	24 seconds
Recovery from Sleep Mode	Approximately 1.0 second (motion-sensor activated)
First Copy Time (FC/B&W)	MP C4504: 5.7/4.0 seconds MP C6004: 4.5/3.1 seconds
Copy Resolution	600 dpi
Quantity Indicator	Up to 999 copies
Single Pass Document Feeder (SPDF)	Original Capacity: 220 sheets Original Size: 5.5" x 8.5" – 11" x 17" (A5 – A3)
Paper Capacity	Paper Weights: Simplex: 11 – 34 lb. Bond (40 – 128 g/m ²), Duplex: 14 – 34 lb. Bond (52 – 128 g/m ²) Standard: 2 x 550 sheets + 100-Sheet Bypass Tray, Maximum: 4,700 sheets (w/Tandem LCT + Side LCT)
Supported Paper Sizes	1st Paper Tray: 8.5" x 11" (A4) 2nd Paper Tray: 5.5" x 8.5" – 12" x 18" (A6 – A3), Envelopes Bypass: Up to 12" x 18", Envelopes Custom Sizes: Width: 3.5" – 12.6" (90 – 320 mm), Length: 5.8" – 49.6" (148 – 1260 mm)
Supported Paper Weights	Standard Trays: 16 – 80 lb. Bond/166 lb. Index (60 – 300 g/m ²) Bypass Tray: 14 – 80 lb. Bond/166 lb. Index (52 – 300 g/m ²) Duplex Unit: 14 – 68 lb. Bond/142 lb. Index (52 – 256 g/m ²)
Paper Types	Plain, Recycled, Special Paper 1 – 3, Letterhead, Cardstock, Preprinted Paper, Bond Paper, High-Gloss Coated Paper, Color Paper, Envelopes, Coated, Labels* & OHP*
Auto Duplex	Standard
Output Capacity	Standard: 500 sheets Maximum: 3,625 sheets
Zoom	25% – 400% in 1% increments

Dimensions (WxDxH)	26.3" x 29.1" x 47.5" (668 x 738 x 1205 mm) (Includes SPDF and Two-Tray Paper Bank)
Weight	228 lbs. (103 kg)
Power Requirements	120V – 127V, 60Hz, 15A
Power Consumption	1,584W or less; Sleep Mode: .79W
TEC Value**	MP C4504: 1.8 kWh/week MP C6004: 2.8 kWh/week

*Bypass Tray Only

**Typical Electricity Consumption by ENERGY STAR Qualified Imaging Equipment Test Procedure

Printer Specifications (Standard)

CPU	Intel Atom Processor Bay Trail 1.75 GHz
Memory/HDD	2 GB RAM/320GB HDD Standard & 4GB RAM/320GB HDD Option Standard: PCL5c, PCL6, PDF Optional: Adobe® PostScript®3, XPS, IPDS & PictBridge
Page Description Languages	Standard: PCL: 45 Scalable fonts + International 13 fonts Optional: PostScript 3: 136 Roman fonts; IPDS: 108 Roman fonts
Font Support	1200 x 1200 dpi Standard: 1000Base-T/100Base-TX/10Base-T Ethernet, USB2.0 Type A (3 Ports), SD Slot on Operation Panel Option: IEEE1284/ECP; IEEE802.11a/b/g/n; USB2.0 Type B
Max. Print Resolution	1200 x 1200 dpi
Network Interfaces	Standard: 1000Base-T/100Base-TX/10Base-T Ethernet, USB2.0 Type A (3 Ports), SD Slot on Operation Panel Option: IEEE1284/ECP; IEEE802.11a/b/g/n; USB2.0 Type B TCP/IP (IPv4, IPv6)
Network Protocol Support	Windows Vista/7/8.1/10/Server 2008/Server 2008R2/ Server2012/ Server 2012R2
Network/OS	Unix; Sun Solaris, HP-UX, SCO OpenServer, RedHat Linux, IBM AIX, Citrix Presentation Server 4.5, XenApp 5.0 Mac OS X v.10.7 or later, SAP R/3, IBM iSeries AS/400-using OS/400 Host Print Transform Device Manager NX, Web Image Monitor, @Remote
Utilities	

Document Server Specifications (Standard)

Max. Stored Documents	3,000
Max. Pages/Document	2,000
Max. Page Capacity	9,000
Max. Number of Folders	200

Scanner Specifications (Standard)

Scanner Resolution	B&W and FC scanning at 100 – 600 dpi, Up to 1200 dpi for TWAIN scanning
Scanning Speed (B&W & Color LTR)	200/300 dpi: 110 ipm Simplex/180 ipm Duplex
Scan Area	11.7" x 17" (297 mm – 432 mm)
Compression Method	B&W TIFF: MH, MR, MMR, JBIG2 Color: JPEG
Supported File Formats	Single/Multi-Page TIFF, PDF, High Compression PDF & PDF/A, Single-Page JPEG
Scan Modes	Scan-to-Email (with LDAP support) Scan-to-Folder (SMB/FTP) Scan-to-URL Scan-to-Media (USB/SD Card) Network TWAIN Scanning

Facsimile Specifications (Optional)

Type	ITU-T (CCITT) G3
Circuit	PSTN, PBX
Resolution	200 x 100 dpi, 200 x 200 dpi, 400 x 400 dpi (with optional SAF memory)
Modem Speed	33.6K – 2,400 bps w/Auto Fallback
Compression Method	MH, MR, MMR, JBIG
Transmission Speed	G3: Approximately 2 seconds/page (JBIG)
Scanning Speed	Up to 81 spm
Auto Dialing	2,000 Quick/Speed Dial numbers; 100 Group Dial numbers
Memory Capacity (SAF)	Standard: 4 MB (approx. 320 pages), Optional: 64 MB (approx. 4,800 pages) with optional SAF memory

Security Features (Standard)

DataOverwriteSecurity System (DOSS), HDD Encryption, User Codes, SNMP v3 Support, Encryption, Locked Print, User Authentication, 802.1x Wired Authentication, Quota Setting/Account Limit, Digitally Signed PDF, and more

RICOH MP C4504/MP C6004

SYSTEM SPECIFICATIONS



Hardware Accessories

Paper Handling Options

Two-Tray Paper Bank (PB3160)¹

Tray Capacity	1,100 sheets (550 sheets x 2 trays)
Paper Size	7.25" x 10.5" to 12" x 18" (A5 – A3)
Paper Weight	14 – 80 lb. Bond/166 lb. Index (52 – 300 g/m ²)
Dimensions (WxDxH)	23.1" x 27" x 9.7" (587 x 685 x 247 mm)

One-Tray Paper Bank (PB3150)¹

Tray Capacity	550 sheets x 1 tray
Paper Size	7.25" x 10.5" to 12" x 18" (A5 – A3)
Paper Weight	14 – 80 lb. Bond/166 lb. Index (52 – 300 g/m ²)
Dimensions (WxDxH)	23.1" x 27" x 4.7" (587 x 685 x 120 mm)

Requires installation of Caster Table Type M3

Tandem Large Capacity Tray (PB3230)¹

Tray Capacity	2,000 sheets (1,000 sheets x 2)
Paper Size	8.5" x 11" (A4)
Paper Weight	14 – 80 lb. Bond/166 lb. Index (52 – 300 g/m ²)
Dimensions (WxDxH)	23.1" x 27" x 9.7" (587 x 685 x 247 mm)

Side Large Capacity Tray (RT3030)

Tray Capacity	1,500 sheets
Paper Size	8.5" x 11" (A4)
Paper Weight	14 – 80 lb. Bond/166 lb. Index (52 – 300 g/m ²)
Dimensions (WxDxH)	13.4" x 21.4" x 11.4" (340 x 545 x 290 mm)

Requires installation of Two-Tray Paper Bank (PB3160) or Tandem LCT (PB3230)

Output Trays & Finisher Options

Internal Shift-Sort Tray (SH3070)¹

Tray Capacity	250 sheets (8.5" x 11" or smaller) (A4 – A5) 125 sheets (8.5" x 14" or larger) (B4 – A3)
Paper Size	5.5" x 8.5" to 12" x 18" (A5 – A3)
Paper Weight	14 – 80 lb. Bond/166 lb. Index (52 – 300 g/m ²)

Cannot be installed with any Finisher

One-Bin Tray (BN3110)

Paper Size	5.5" x 8.5" to 12.6" x 17.7" (A5 – A3)
Paper Weight	14 – 80 lb. Bond/166 lb. Index (52 – 300 g/m ²)
Tray Capacity	125 sheets

500-Sheet Internal Finisher (SR3130)¹

Paper Size	5.5" x 8.5" to 12" x 18" (A6 – A3)
Paper Weight	14 – 80 lb. Bond/166 lb. Index (52 – 300 g/m ²)
Stack Capacity	500 sheets (8.5" x 11" or smaller) (A4) 250 sheets (8.5" x 14" or larger) (B4 – A3)
Staple Paper Size	7.25" x 10.5" to 11" x 17" (A4 – A3)
Staple Paper Weight	14 – 28 lb. Bond (52 – 105 g/m ²)
Staple Capacity	50 sheets (8.5" x 11") (A4) 30 sheets (8.5" x 14" or larger, and/or Mixed Sizes) (B4 – A3)

Staple Positions	Top, Bottom, 2 Staples
Dimensions (WxDxH)	21.5" x 20.6" x 6.7" (546 x 523 x 170 mm)

*Not available for MP C6004.

2-/3-Hole Punch Unit (PU3040NA)

(Optional; Installs inside SR3130 Internal Finisher)	
Punch Paper Sizes	7.25" x 10.5" to 11" x 17" (A4 – A3)
Punch Paper Weight	14 – 45 lb. Bond/93 lb. Index (52 – 169 g/m ²)

1,000-Sheet Hybrid Staple + Stapleless Finisher (SR3210) ^{1,2,3}

Paper Size	Proof Tray: 5.5" x 8.5" to 12" x 18" (A6 – A3) Shift Tray: 5.5" x 8.5" to 12" x 18" (A6 – A3)
Paper Weight	Proof Tray: 14 – 45 lb. Bond/93 lb. Index (52 – 169 g/m ²) Shift Tray: 14 – 80 lb. Bond/166 lb. Index (52 – 300 g/m ²)
Stack Capacity	Proof Tray: 250 sheets (8.5" x 11") (A4); 50 sheets (8.5" x 14" or larger) (B4) Shift Tray: 1,000 sheets (8.5" x 11") (A4); 500 sheets (8.5" x 14" or larger) (B4)

Stapleless Capacity	2 – 5 sheets/set
Staple Capacity	50 sheets (8.5" x 11") (A4) 30 sheets (8.5" x 14" or larger) (B4) 8.5" x 11" to 12" x 18" (A4 – A3) 14 – 28 lb. Bond (52 – 105 g/m ²)
Staple Paper Size	Top, Bottom, 2 Staples
Staple Positions	Top, Bottom, 2 Staples
Dimensions (WxDxH)	22.2" x 24.4" x 37.8" (563 x 620 x 960 mm)

1,000-Sheet Booklet Finisher (SR3220)^{1,2,3}

Paper Size	Proof Tray: 5.5" x 8.5" to 12" x 18" (A6 – A3) Shift Tray: 5.5" x 8.5" to 12" x 18" (A6 – A3) Booklet Tray: 8.5" x 11" to 12" x 18" (A4 – A3)
Paper Weight	Proof Tray: 14 – 45 lb. Bond (52 – 169 g/m ²) Shift Tray: 14 – 80 lb. Bond/166 lb. Index (52 – 300 g/m ²) Booklet Tray: 14 – 28 lb. Bond (52 – 105 g/m ²)

Stack Capacity	Proof Tray: 250 sheets (8.5" x 11" or smaller) (A4); 500 sheets (8.5" x 14" or larger) (B4 – A3) Shift Tray: 1,000 sheets (8.5" x 11" or smaller) (A4); 500 sheets (8.5" x 14" or larger) (B4 – A3) Booklet Tray: 20 Sets (2 – 5 sheets), 10 Sets (6 – 10 sheets) & 7 Sets (11 – 15 sheets)
----------------	---

Staple Capacity	Normal Staple: 50 sheets (8.5" x 11") (A4); 30 sheets (8.5" x 14" or larger) (B4 – A3) 15 sheets
Saddle Stitch	Normal Staple: 8.5" x 11" to 12" x 18" (A4 – A3) Saddle Stitch: 8.5" x 11" to 12" x 18" (A4 – A3)
Staple Paper Weight	14 – 28 lb. Bond (52 – 105 g/m ²)

Staple Positions	Top, Bottom, 2 Staples, Booklet
Dimensions (WxDxH)	22.2" x 24.4" x 37.8" (563 x 620 x 960 mm)

Staple Capacity	Normal Staple: 50 sheets (8.5" x 11") (A4); 30 sheets (8.5" x 14" or larger) (B4 – A3) 15 sheets
Saddle Stitch	Normal Staple: 8.5" x 11" to 12" x 18" (A4 – A3) Saddle Stitch: 8.5" x 11" to 12" x 18" (A4 – A3)
Staple Paper Weight	14 – 28 lb. Bond (52 – 105 g/m ²)

Staple Positions	Top, Bottom, 2 Staples, Booklet
Dimensions (WxDxH)	22.2" x 24.4" x 37.8" (563 x 620 x 960 mm)

2-/3-Hole Punch Unit (PU 3050NA)	(Optional; Installs inside SR3210 or SR3220 Finisher)
Punch Paper Sizes	5.5" x 8.5" to 11" x 17" (A5 – A3)
Punch Paper Weight	14 – 68 lb. Bond/142 lb. Index (52 – 256 g/m ²)

2,000-Sheet Booklet Finisher (SR3240) ^{1,2,3}	
Paper Size	Proof Tray: 5.5" x 8.5" to 12" x 18" (A6 – A3) Shift Tray: 5.5" x 8.5" to 12" x 18" (A6 – A3) Booklet Tray: 8.5" x 11" to 12" x 18" (A4 – A3)

Paper Weight	Proof Tray: 14 – 58 lb. Bond/122 lb. Index (52 – 220 g/m ²) Shift Tray: 14 – 80 lb. Bond/166 lb. Index (52 – 300 g/m ²) Booklet Tray: 17 – 28 lb. Bond (64 – 105 g/m ²)
--------------	---

Stack Capacity	Proof Tray: 250 sheets (8.5" x 11" or smaller) (A4) 50 sheets (8.5" x 14" or larger) (B4) Shift Tray: 2,000 sheets (8.5" x 11" or smaller) (A4) 1,000 sheets (8.5" x 14" or larger) (B4) Booklet Tray: 30 sets (2 – 5 sheets) or 15 sets (6 – 10 sheets) or 10 sets (11 – 15 sheets) or 6 sets (16 – 20 sheets)
----------------	---

Staple Capacity	Normal Staple: 50 sheets (8.5" x 11" to 11" x 17" and Mixed Sizes) (A4 – A3) Saddle Stitch: 20 Sheets
-----------------	--

Staple Paper Size	Normal Staple: 8.5" x 11" to 11" x 17" (A4 – A3) Saddle Stitch: 8.5" x 11" to 12" x 18" (A4 – A3)
-------------------	--

Staple Paper Weight	14 – 28 lb. Bond (52 – 105 g/m ²)
Staple Positions	Top, Bottom, 2 Staples, Top Slant, Booklet
Dimensions (WxDxH)	25.9" x 24.1" x 37.8" (657 x 613 x 960 mm)

3,000-Sheet Finisher (SR3230)^{1,2,3}

Paper Size	Proof Tray: 5.5" x 8.5" to 12" x 18" (A6 – A3) Shift Tray: 5.5" x 8.5" to 12" x 18" (A6 – A3)
------------	--

Paper Weight	Proof Tray: 14 – 58 lb. Bond/122 lb. Index (52 – 220 g/m ²) Shift Tray: 14 – 80 lb. Bond/166 lb. Index (52 – 300 g/m ²)
--------------	--

Stack Capacity	Proof Tray: 250 sheets (8.5" x 11" or smaller) (A4) 50 sheets (8.5" x 14" or larger) (B4) Shift Tray: 3,000 sheets (8.5" x 11") (A4) 1,500 sheets (8.5" x 14" or larger) (B4)
----------------	--

Staple Capacity	50 sheets (8.5" x 11" to 11" x 17") or Mixed Sizes (A4 – A3)
Staple Paper Size	8.5" x 11" to 11" x 17" (A4 – A3)
Staple Paper Weight	14 – 28 lb. Bond (52 – 105 g/m ²)

Staple Positions	Top, Bottom, 2 Staples, Top Slant
Dimensions (WxDxH)	25.9" x 24.1" x 37.8" (657 x 613 x 960 mm)

2-/3-Hole Punch Unit (PU3060NA)

(Optional; Installs inside SR3230 or SR3240 Finishers)	
Punch Paper Sizes	5.5" x 8.5" to 11" x 17" (A5 – A3)
Punch Paper Weight	14 – 68 lb. Bond/142 lb. Index (52 – 256 g/m ²)

Color Controller E-23C	
Controller Type	Embedded Type
Fiery Platform	FS150
CPU	Intel Processor G850 2.9GHz
Host Interface	1000Base-T/100Base-TX/10Base-T
Memory	2 GB
Internal HDD	500 GB
Operating System	Linux
Network Protocol	TCP/IP (IPv4/IPv6), SMB, Bonjour
Printer Description	Standard: PostScript 3 & PCL6/5c Language

Max Print Resolution	Up to 1200 dpi (2 bit)
Max Scan Resolution	Up to 600 dpi
Fonts	PS3: 138 fonts/PCL: 81 AGFA fonts
Utilities	Standard: Command WorkStation [®] 5, Fiery [®] Scan, Printer Delete Utility, Fiery Web Tools, Fiery Bridge, Secure Erase and Fiery VUE

Optional: Fiery Impose, Fiery Compose, Fiery Auto Trap, EFI Spot-On [™] , Fiery Hot Folders, Fiery Color Profiler Suite v4.0, Fiery ES-2000 Spectrophotometer and EFI Productivity Pack	
--	--

Color Management Tools	ICC Profile, Color Chart, CMYK Color Reference Pages, RGB Color Tests, Trapping Support and ColorWise [®] Pro Tools
------------------------	--

Additional Accessories

Banner Paper Guide Tray Type M19, Caster Table Type M3, Bridge Unit BU3070, Cabinet Type F, Camera Direct Print Card Type M19, Card Reader Bracket Type 3352, Extended USB Board Type M19, External Keyboard Bracket Type M19, Fax Connection Unit Type M20, Fax Memory Unit Type M19 64MB, File Format Converter Type M19, G3 Interface Unit Type M20, HotSpot MFP Option Type S, IEEE 802.11a/g/n Interface Unit Type M19, IEEE 1284 Interface Board Type M19, Imageable Area Extension Unit Type M19, Key Counter Bracket Type M3, Memory Unit Type M19 4GB, NFC Card Reader Type M19, OCR Unit Type M13, Optional Counter Interface Unit Type M12, Postscript3 Unit Type M19, Power Filter ESP XG-PCS-15D, Smart Card Reader Built-in Unit Type M19, USB Device Server Option Type M19, XPS Direct Print Option Type M19

¹Either the Cabinet Type F or one of the paper options must be installed.
²Requires configuration with Bridge Unit BU3070.
³Cannot be installed together.
⁴Requires installation of Two-Tray Paper Bank (PB3160) or Tandem Large Capacity Tray (PB3230).

Some options may not be available at the time of market release. Specifications are subject to change without notice. For maximum performance and yield, we recommend using genuine Ricoh parts and supplies.



www.ricoh-usa.com

Ricoh USA, Inc., 70 Valley Stream Parkway, Malvern, PA 19355, 1-800-63-RICOH
RICOH and the Ricoh logo are registered trademarks of Ricoh Company, Ltd. All other trademarks are the property of their respective owners ©2016. Ricoh USA, Inc. All rights reserved. The content of this document, and the appearance, features and specifications of Ricoh products and services are subject to change from time to time without notice. Products are shown with optional features. While care has been taken to ensure the accuracy of this information, Ricoh makes no representation or warranties about the accuracy, completeness or adequacy of the information contained herein, and shall not be liable for any errors or omissions in these materials. Actual results will vary depending upon use of the products and services, and the conditions and factors affecting performance. The only warranties for Ricoh products and services are as set forth in the express warranty statements accompanying them.