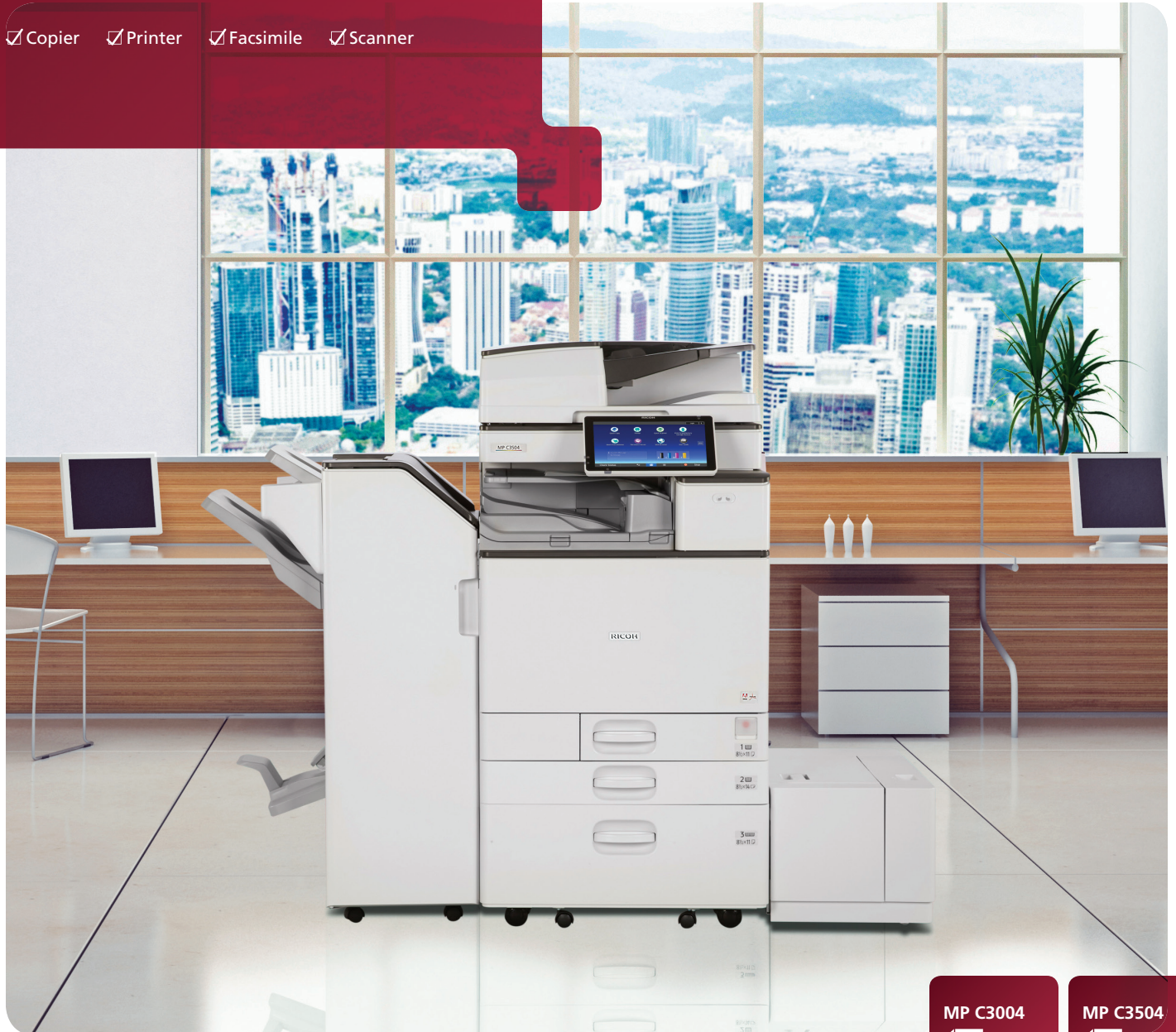


Multifunction Color

RICOH MP C3004/ MP C3504

✓ Copier ✓ Printer ✓ Facsimile ✓ Scanner



RICOH
imagine. change.

MP C3004

30
ppm
monochrome
and full-color

MP C3504

35
ppm
monochrome
and full-color

A new way to work

Welcome to Workstyle Innovation. Now you can integrate multiple processes and simplify complex tasks across an office or throughout an organization with ease. Enjoy a new way to work, powered by Ricoh's new Workstyle Innovation Technology, by creating unique and customized solutions and deploying workflow applications that streamline your business. Simply put, it's an innovative and intuitive way to be more productive. Use the RICOH® MP C3004/MP C3504 to print, scan, copy and fax information in multiple formats to a wider range of audiences quickly and easily. Use the advanced 10.1"-wide Super VGA Smart Operation Panel to create your own digital workflows — with shortcuts, advanced scan-to capabilities and time-saving automation — so you can deliver your messages effortlessly with a simple flick, pinch or swipe. Add richer colors, sharper resolution and professional finishing to highlight information and impress audiences every time.

- Produce up to 35 color prints/copies per minute
- Use the intuitive touchscreen to multitask with a single flick, pinch or swipe
- Create customized workflows to expedite everyday tasks
- Print and share information on the go via your personal mobile device
- Highlight information with breathtaking colors and professional finishing
- Take advantage of eco-friendly features to lower operating costs and reduce overall environmental impact without sacrificing business productivity





Multitask at a faster pace

Move information quickly, anywhere at any time

Get in touch with all-in-one convenience

There's no shortage of things to do or information to share, but you are short on time. Use the RICOH MP C3004/MP C3504 to perform everyday office tasks with incredible speed and ease. With a built-in motion sensor, the MFP is ready to work as soon as you are. Print colorful presentations, images, brochures and more at up to 35 pages per minute and grab them on your way to an important meeting. Send full-color scans of floor plans, schematics and photos via email. Copy handwritten notes for your colleagues. Send a contract via fax without wasting paper or wondering if it was received. With an optional paper capacity of up to a whopping 4,700 sheets, you can manage more projects with fewer interruptions so you can transition quickly from one revenue-generating project to the next.



Add color to look even brighter

Stand out from the crowd by delivering information that jumps off the page. As the MP C3004/MP C3504 processes each file, it recalibrates itself so colors remain vivid with 1200 dpi resolution from the first page to the last without deterioration. By using P_xP[®]-EQ toner, you can print on thicker stocks up to 300 gsm/80 lb. Bond without worrying whether it will stick precisely. To give your photos, brochures, presentations and other graphics-intensive documents a more professional look, choose the new Fiery[®] E-23C Color Controller for exceptional spot-color reproductions using RGB, CMYK and PANTONE[®] colors. You can even print banners and posters from the MFP instead of hunting down a wide-format device.



Work wherever you are

Your workload isn't going to stop. Why should you? Use your smartphone or tablet to locate the MFP and print on the move without utilities, software or drivers. You can download the RICOH Smart Device Connector app and connect to the MP C3004/MP C3504 automatically just by touching your smart device to the MFP's Near Field Communication (NFC) tag. From there, print, scan and share documents and photos between the MFP and your smartphone or tablet instantly. You can even use your personal address book to find recipients with a single touch to save time. With the RICOH Smart Device Connector app, you can grab information from Cloud storage or on your personal mobile device for fast, convenient printing at the MFP.





Customize the way you work

Add a personal touch to every job

You know exactly what needs to be done. Use Workstyle Innovation Technology to get it done faster. Create your own customized iconic shortcuts for frequently used workflows, whether you're scanning documents to coworkers or printing out the latest color brochure. Simply tap into one of the workflows from the Home Screen and bypass several manual steps that can slow you down. For faster scanning of two-sided identity documents, simply click on the ID Card Copy app and the device scans both sides onto a single-sided document for easier reading with less waste. For easy document retrieval, use the embedded OCR option to place metadata on images and PDF files, so you can search by keywords later in a fraction of the time. Add plug-and-play Ricoh or third party software to streamline digital workflows and reduce paper and operating costs even more.



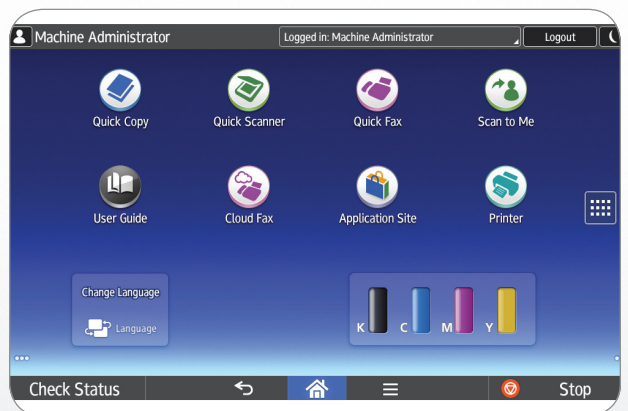
Tap into a smarter way to work

Finding the best way to improve productivity is pretty straightforward. Use the easy-to-follow design of the touchscreen to perform document management tasks more quickly and accurately. With Workstyle Innovation Technology, you can choose from a wide range of smart apps on the new user interface to simplify everyday workflows for printing, scanning, copying, faxing and more. Just tap on your desired task and see everything you need to make the best decision. For example, you can add, check and confirm scan-to destinations by scrolling and tapping. Or, you can change any scan setting with a simple flick of your finger. Use widgets to set shortcuts, adjust settings, check system status, grab online data and more in seconds from the device. You can even download additional apps and widgets from our Application Site and update the MFP's capabilities yourself with ease.



Take a swipe at faster workflows

Get in touch with an easier, more intuitive way to churn through jobs with the MP C3004/MP C3504. Use the familiar drag-and-drop, pinch-and-flick and swipe scrolling you use every day on your smartphone or tablet to navigate from one task to the next with ease on the impressive 10.1"-wide Super VGA touchscreen. We've removed all hard keys, so you can tap into workflows, access critical information and check system settings instantly. With the oversized screen and simple layout, you have everything you need right at your fingertips. In fact, you can perform frequently-used core tasks like printing, copying, scanning and faxing, from a simplified user interface with one-touch controls. Still prefer the legacy user interface from previous Ricoh devices? No problem. Just choose a touchscreen version of it from the Home Screen.



Make easier and safer collaboration automatic

Complete more jobs with fewer delays

The more your audience waits, the more likely it is to find information elsewhere. Use the MP C3004/MP C3504 to instantly access up to 3,000 frequently used documents stored right on the device. Or, you can use your personal mobile device or our web-enabled Integrated Cloud Environment (ICE) to grab information without servers, system integration, software updates or expense. Scan two-sided hard copy documents at 180 ipm with the 220-sheet Single Pass Document Feeder. Take advantage of a wide range of scan-to capabilities to share the information digitally with anyone, anywhere. For output, use RICOH Device Software Manager and install print drivers without assistance in only moments. Track how you're doing via optional web-enabled administration tools, including automated service alerts, real-time device monitoring and troubleshooting.



Keep tabs on what's most important

Your ideas can only make an impact if they reach the right people. Help protect information from threats with multiple security capabilities, including user authentication. Have every user log in by entering a passcode or billing code. Or, with the MFP's embedded Near Field Communication (NFC) capability, have users swipe their ID card at an optional NFC card reader on the device. You can restrict individual users from specific tasks or set quotas to limit the number of prints. Plus, it helps ensure print jobs for mobile users remain secure until released at the MFP. You can also take advantage of watermarks to help thwart unauthorized copies of confidential documents, encryption protection and automatic overwrites for any information left on the hard drive.



Save your energy

Improve your bottom line while protecting the environment with multiple features designed specifically to reduce energy costs. The MP C3004/MP C3504 meets EPEAT® Gold criteria* and ENERGY STAR® certifications and offers exceptional Typical Electricity Consumption (TEC) as low as 1.2 kWh/week. Cut paper usage in half with default duplex printing. Reduce energy usage when you're out of the office by programming the MFP to power on or off to coincide with office work hours. The system is also equipped with an innovative motion sensor, which senses an approaching user by detecting the differences in body temperature versus the surrounding environment. The system will awake from Sleep mode and turn on the operation panel within one second so it is ready to begin job programming by the time the user arrives at the machine.

*EPEAT Gold rating is applicable only in the USA.



To view detailed features of our multifunction products online go to www.ricoh-usa.com/products

Perform more jobs with fewer hassles



- 1 Smart Operation Panel:** Choose from multiple intuitive user interfaces to customize and automate workflows on the 10.1"-wide Super VGA Smart Operation Panel. Create iconic shortcuts, add convenient widgets and access information with one-touch control using the same motions you use on your smartphone or tablet.
- 2 220-Sheet Single Pass Document Feeder (SPDF):** Copy, scan and fax two-sided full-color and black-and-white documents at high speeds in a single pass.
- 3 User Authentication:** Use embedded Near Field Communication (NFC) technology and an optional NFC Card Reader to track activity for every user who logs in by proximity card.
- 4 Paper Trays (Standard):** With two 550-sheet paper trays, one of which can accommodate paper sizes up to 12" x 18", you can produce more jobs with fewer reloads.
- 5 100-Sheet Bypass Tray:** Feed larger paper sizes — including envelopes and sheet sizes up to 12.6" x 49.6" — to create and share a wider range of deliverables with your audiences. Add an optional banner paper guide tray for impressive banner printing.
- 6 Document Server:** Access up to 3,000 frequently used files on the MFP's hard drive in moments. Create up to 200 shared or passcode-protected personal folders to store the digital files.
- 7 Tandem Large Capacity Tray (Optional):** Add more capacity for extended runs of 8.5" x 11" sizes with two 1,000-sheet paper trays.
- 8 1,500-Sheet Side Large Capacity Tray (Optional):** Maximize uptime by extending capacity by up to 1,500 sheets of letter-sized paper.
- 9 125-Sheet One Bin Tray (Optional):** Separate output so users can retrieve documents quickly.
- 10 1,000-Sheet External Hybrid Stapleless + Stapler Finisher:** Use the stapleless feature for smaller document sets (up to five sheets). Need a larger document set? The finisher automatically staples for six or more sheets. In addition, you can choose from a wide range of other available finishers (see table on page 7).
- 11 Dual Network Support (Optional):** Use the additional network interface port to connect to two different networks simultaneously.
- 12 Web Browser:** Take advantage of the built-in web browser to search for web pages directly from the Smart Operation Panel.
- 13 Motion Sensor:** Senses approaching users and awakens the MFP from Sleep mode so it is ready by the time the user arrives at the machine.

Put your best finishing touches on display

Add the finishing touches so your message connects with your audience every time. With the External Hybrid Stapleless + Stapler Finisher, you can conserve resources by eliminating staples entirely for document sets with five or fewer pages. For document sets from 6 – 50 pages, the finisher automatically converts to staples. Or, choose the Internal Stapleless Finisher and get the same staple-free capability. Both stapleless finishers are ideal for educational, manufacturing and healthcare environments.

Looking for a finisher to accommodate your unique requirements? Simply choose the one with the advanced paper handling, stacking and stapling capabilities you need most. Automate finishing tasks and give your projects a professional-grade look that's sure to get noticed without compromising your time or budget.



| Finisher | Paper Capacity | Hole-Punch | Saddle Stitch | Stapleless |
|-----------------|----------------|------------|-----------------|---|
| SR3180 Internal | 250 Sheets | N/A | N/A | Up to 5 Sheets |
| SR3130 Internal | 500 Sheets | Option | N/A | N/A |
| SR3210 External | 1,000 Sheets | Option | N/A | Stapleless – Up to 5 Sheets Auto Stapled – Up to 50 Sheets (LTR) |
| SR3220 External | 1,000 Sheets | Option | Up to 15 Sheets | N/A |

General Specifications

| | |
|---|---|
| Printing Process | 4-Drum Method |
| Output Speed (Copy/Print) | MP C3004: 30-ppm B&W & FC (LTR) MP C3504: 35-ppm B&W & FC (LTR) |
| Warm-Up Time | 25 seconds |
| Recovery from Sleep Mode | Approximately 1.0 second (motion sensor activated) |
| First Copy Time (FC/B&W) | 7.1/4.6 seconds |
| Copy Resolution | 600 dpi |
| Quantity Indicator | Up to 999 copies |
| Single Pass Document Feeder (SPDF) | Original Capacity: 220 sheets Original Size: 5.5" x 8.5" – 11" x 17" (A5 – A3) |
| Paper Capacity | Paper Weights: Simplex: 11 – 34 lb. Bond (40 – 128 g/m ²), Duplex: 14 – 34 lb. Bond (52 – 128 g/m ²) Standard: 2 x 550 sheets + 100-Sheet Bypass Tray Maximum: 4,700 sheets (w/Tandem LCT + Side LCT) |
| Supported Paper Sizes | 1st Paper Tray: 8.5" x 11" (A4) 2nd Paper Tray: 5.5" x 8.5" – 12" x 18" (A6 – A3), Envelopes Bypass: Up to 12" x 18", Envelopes Custom Sizes: Width: 3.5" – 12.6" (90 – 320 mm), Length: 5.8" – 49.6" (148 – 1260 mm) |
| Supported Paper Weights | Standard Trays: 16 – 80 lb. Bond/166 lb. Index (60 – 300 g/m ²) Bypass Tray: 14 – 80 lb. Bond/166 lb. Index (52 – 300 g/m ²) Duplex Unit: 14 – 68 lb. Bond/142 lb. Index (52 – 256 g/m ²) |
| Paper Types | Plain, Recycled, Special Paper 1-3, Letterhead, Cardstock, Preprinted Paper, Bond Paper, High-Gloss Coated Paper, Color Paper, Envelopes, Coated, Labels* & OHP* |
| Auto Duplex | Standard |

| | |
|--|--|
| Output Capacity | Standard: 500 sheets Maximum: 1,625 sheets |
| Zoom | 25% – 400% in 1% increments |
| Dimensions (WxDxH) | 26.3" x 29.1" x 47.5" (668 x 738 x 1205 mm) (Includes SPDF and Two-Tray Paper Bank) |
| Weight | 223 lbs. (101 kg) |
| Power Requirements | 120V – 127V, 60Hz, 15A |
| Power Consumption | 1,584W or less; Sleep Mode: .83W |
| TEC Value** | MP C3004: 1.2 kWh/week MP C3504: 1.3 kWh/week |
| *Bypass Tray Only **Typical Electricity Consumption by ENERGY STAR Qualified Imaging Equipment Test Procedure | |
| Printer Specifications (Standard) | |
| CPU | Intel Atom Processor Bay Trail 1.33 GHz |
| Memory /HDD | 2 GB RAM/250GB HDD Standard & 4GB RAM/250GB HDD Option |
| Page Description Languages | Standard: PCL5c, PCL6, PDF Optional: Adobe® PostScript®3*, PictBridge, XPS |
| Font Support | Standard: PCL: 45 Scalable fonts + International 13 fonts Optional: PostScript 3: 136 Roman fonts |
| Max. Print Resolution | 1200 x 1200 dpi |
| Network Interfaces | Standard: 1000Base-T/100Base-TX/10Base-T Ethernet, USB2.0 Type A (3 Ports), SD Slot on Operation Panel Option: IEEE1284/ECP, IEEE802.11a/b/g/n; USB2.0 Type B |
| Network Protocol Support | TCP/IP (IPv4, IPv6) |
| Network/OS | Windows® Vista/7/8/8.1/10/Server 2008/Server 2008R2/ Server 2012/Server 2012R2 Unix; Sun Solaris, HP-UX, SCO OpenServer, RedHat Linux, IBM AIX, Citrix Presentation Server 4.5, XenApp 5.0, Mac OS X v.10.7 or later, SAP R/3, IBM iSeries AS/400-using OS/400 |
| Utilities | Host Print Transform Device Manager NX Series, Web Image Monitor, @Remote |

Document Server Specifications (Standard)

| | |
|-------------------------------|-------|
| Max. Stored Documents | 3,000 |
| Max. Pages/Document | 2,000 |
| Max. Page Capacity | 9,000 |
| Max. Number of Folders | 200 |

Scanner Specifications (Standard)

| | |
|--|---|
| Scanner Resolution | B&W and FC scanning at 100 – 600 dpi, Up to 1200 dpi for TWAIN scanning |
| Scanning Speed (B&W & Full-Color LTR) | 200/300 dpi: 110 ipm Simplex/ 180 ipm Duplex |
| Scan Area | 11.7" x 17" (297 mm – 432 mm) |
| Compression Method | B&W TIFF: MH, MR, MMR, JBIG2 Full-Color: JPEG |
| Supported File Formats | Single/Multi-Page TIFF, PDF, High Compression PDF & PDF/A Single Page JPEG |
| Scan Modes | Scan-to-Email (with LDAP support) Scan-to-Folder (SMB/FTP) Scan-to-URL Scan-to-Media (USB/SD Card) Network TWAIN Scanning |

Facsimile Specifications (Optional)

| | |
|------------------------------|---|
| Type | ITU-T (CCITT) G3 |
| Circuit | PSTN, PBX |
| Resolution | 200 x 100 dpi, 200 x 200 dpi, 400 x 400 dpi (with optional SAF memory) |
| Modem Speed | 33.6K – 2,400 bps w/Auto Fallback |
| Compression Method | MH, MR, MMR, JBIG |
| Transmission Speed | G3: Approximately 2 seconds/page (JBIG) |
| Scanning Speed | Up to 81 spm |
| Auto Dialing | 2,000 Quick/Speed Dial numbers; 100 Group Dial numbers |
| Memory Capacity (SAF) | Standard: 4 MB (approx. 320 pages), Optional: 64 MB (approx. 4,800 pages) with optional SAF memory |

RICOH MP C3004/MP C3504

SYSTEM SPECIFICATIONS



Security Features (Standard)

DataOverwriteSecurity System (DOSS), HDD Encryption, User Codes, SNMP v3 Support, Encryption, Locked Print, User Authentication, 802.1x Wired Authentication, Quota Setting/Account Limit, Digitally Signed PDF, and more

Hardware Accessories

Paper Handling Options

Two-Tray Paper Bank (PB3160)¹

Tray Capacity 1,100 sheets (550 sheets x 2 trays)
 Paper Size 7.25" x 10.5" to 12" x 18" (A5 – A3)
 Paper Weight 14 – 80 lb. Bond/166 lb. Index (52 – 300 g/m²)
 Dimensions (WxDxH) 23.1" x 27" x 9.7" (587 x 685 x 247 mm)

One-Tray Paper Bank (PB3150)¹

Tray Capacity 550 sheets x 1 tray
 Paper Size 7.25" x 10.5" to 12" x 18" (A5 – A3)
 Paper Weight 14 – 80 lb. Bond/166 lb. Index (52 – 300 g/m²)
 Dimensions (WxDxH) 23.1" x 27" x 4.7" (587 x 685 x 120 mm)

Requires installation of Caster Table Type M3

Tandem Large Capacity Tray (PB3230)¹

Tray Capacity 2,000 sheets (1,000 sheets x 2)
 Paper Size 8.5" x 11" (A4)
 Paper Weight 14 – 80 lb. Bond/166 lb. Index (52 – 300 g/m²)
 Dimensions (WxDxH) 23.1" x 27" x 9.7" (587 x 685 x 247 mm)

Side Large Capacity Tray (RT3030)

Tray Capacity 1,500 sheets
 Paper Size 8.5" x 11" (A4)
 Paper Weight 14 – 80 lb. Bond/166 lb. Index (52 – 300 g/m²)
 Dimensions (WxDxH) 13.4" x 21.4" x 11.4" (340 x 545 x 290 mm)

Requires installation of Two-Tray Paper Bank (PB3160) or Tandem LCT (PB3230)

Output Trays & Finisher Options

Internal Shift-Sort Tray (SH3070)²

Tray Capacity 250 sheets (8.5" x 11" or smaller) (A4 – A5)
 125 sheets (8.5" x 14" or larger) (B4 – A3)
 Paper Size 5.5" x 8.5" to 12" x 18" (A5 – A3)
 Paper Weight 14 – 80 lb. Bond/166 lb. Index (52 – 300 g/m²)

Cannot be installed with any Finisher

1 Bin Tray (BN3110)

Paper Size 5.5" x 8.5" to 12.6" x 17.7" (A5 – A3)
 Paper Weight 14 – 80 lb. Bond/166 lb. Index (52 – 300 g/m²)
 Tray Capacity 125 Sheets

250-Sheet Stapleless Internal Finisher (SR3180)

Paper Size 5.5" x 8.5" to 12" x 18" (A6 – A3)
 Paper Weight 14 – 80 lb. Bond/166 lb. Index (52 – 300 g/m²)
 Stack Capacity 250 sheets (8.5" x 11" or smaller) (A4)
 125 sheets (8.5" x 14" or larger) (B4 – A3)
 Staple Paper Size 8.5" x 11" to 11" x 17" (A4 – A3)
 Staple Paper Weight 17 – 21 lb. Bond (64 – 80 g/m²)
 Stapleless Capacity 2 – 5 sheets/set
 Staple Positions Top, 1 Staple
 Dimensions (WxDxH) 17.1" x 20.3" x 5.9" (435 x 515 x 150 mm)

500-Sheet Internal Finisher (SR3130)²

Paper Size 5.5" x 8.5" to 12" x 18" (A6 – A3)
 Paper Weight 14 – 80 lb. Bond/166 lb. Index (52 – 300 g/m²)
 Stack Capacity 500 sheets (8.5" x 11" or smaller) (A4)
 250 sheets (8.5" x 14" or larger) (B4 – A3)
 Staple Paper Size 7.25" x 10.5" to 11" x 17" (A4 – A3)
 Staple Paper Weight 14 – 28 lb. Bond (52 – 105 g/m²)
 Staple Capacity 30 sheets (8.5" x 14" or larger, and/or Mixed Sizes) (B4 – A3)
 Staple Positions Top, Bottom, 2 Staples
 Dimensions (WxDxH) 21.5" x 20.6" x 6.7" (546 x 523 x 170 mm)

2-/3-Hole Punch Unit (PU3040NA)

(Optional; Installs inside SR3130 Internal Finisher)

Punch Paper Sizes 7.25" x 10.5" to 11" x 17" (A4 – A3)
 Punch Paper Weight 14 – 45 lb. Bond/93 lb. Index (52 – 169 g/m²)

1,000-Sheet Hybrid Staple + Stapleless Finisher (SR3210)^{3,4}

Paper Size Proof Tray: 5.5" x 8.5" to 12" x 18" (A6 – A3)
 Shift Tray: 5.5" x 8.5" to 12" x 18" (A6 – A3)
 Paper Weight Proof Tray: 14 – 45 lb. Bond/93 lb. Index (52 – 169 g/m²)
 Shift Tray: 14 – 80 lb. Bond/166 lb. Index (52 – 300 g/m²)
 Stack Capacity Proof Tray: 250 sheets (8.5" x 11") (A4);
 50 sheets (8.5" x 14" or larger) (B4)
 Shift Tray: 1,000 sheets (8.5" x 11") (A4);
 500 sheets (8.5" x 14" or larger) (B4)
 Stapleless Capacity 2 – 5 sheets/set
 Staple Capacity 50 sheets (8.5" x 11") (A4)
 30 sheets (8.5" x 14" or larger) (B4)
 Staple Paper Size 8.5" x 11" to 12" x 18" (A4 – A3)
 Staple Paper Weight 14 – 28 lb. Bond (52 – 105 g/m²)
 Staple Positions Top, Bottom 2 Staples
 Dimensions (WxDxH) 22.2" x 24.4" x 37.8" (563 x 620 x 960 mm)

2-/3-Hole Punch Unit (PU 3050NA)

(Optional; Installs inside SR3210 or SR3220 Finisher)

Punch Paper Sizes 5.5" x 8.5" to 11" x 17" (A5 – A3)
 Punch Paper Weight 14 – 68 lb. Bond/142 lb. Index (52 – 256 g/m²)

1,000-Sheet Booklet Finisher (SR3220)^{3,4}

Paper Size Proof Tray: 5.5" x 8.5" to 12" x 18" (A6 – A3)
 Shift Tray: 5.5" x 8.5" to 12" x 18" (A6 – A3)
 Booklet Tray: 8.5" x 11" to 12" x 18" (A4 – A3)
 Paper Weight Proof Tray: 14 – 45 lb. Bond (52 – 169 g/m²)
 Shift Tray: 14 – 80 lb. Bond/166 lb. Index (52 – 300 g/m²)
 Booklet Tray: 14 – 28 lb. Bond (52 – 105 g/m²)
 Stack Capacity Proof Tray: 250 sheets (8.5" x 11" or smaller) (A4); 50 sheets (8.5" x 14" or larger) (B4 – A3)
 Shift Tray: 1,000 sheets (8.5" x 11" or smaller) (A4); 500 sheets (8.5" x 14" or larger) (B4 – A3)
 Booklet Tray: 20 Sets (2 – 5 sheets), 10 Sets (6 – 10 sheets) & 7 Sets (11 – 15 sheets)

Staple Capacity

Normal Staple: 50 sheets (8.5" x 11") (A4);
 30 sheets (8.5" x 14" or larger) (B4 – A3)

Saddle Stitch

15 sheets

Staple Paper Size

Normal Staple: 8.5" x 11" to 12" x 18" (A4 – A3)
 Saddle Stitch: 8.5" x 11" to 12" x 18" (A4 – A3)

Staple Paper Weight

14 – 28 lb. Bond (52 – 105 g/m²)

Staple Positions

Top, Bottom, 2 Staples, Booklet

Dimensions (WxDxH)

22.2" x 24.4" x 37.8" (563 x 620 x 960 mm)

Color Controller E-23C

Controller Type

Embedded Type

Fiery Platform

FS150

CPU

Intel Processor G850 2.9GHz

Host Interface

1000Base-T/100Base-TX/10Base-T

Memory

2 GB

Internal HDD

500 GB

Operating System

Linux

Network Protocol

TCP/IP (IPv4/IPv6), SMB, Bonjour

Printer Description

Standard: PostScript 3 & PCL6/5c

Language

Up to 1200 dpi (2 bit)

Max Print Resolution

Up to 600 dpi

Max Scan Resolution

PS3: 138 fonts/PCL: 81 AGFA fonts

Fonts

Standard: Command WorkStation[®] 5,
 Fiery[®] Scan, Printer Delete Utility, Fiery
 Web Tools, Fiery Bridge, Secure Erase
 and Fiery VUE

Utilities

Optional: Fiery Impose, Fiery Compose,
 Fiery Auto Trap, EFI Spot-On[™], Fiery Hot
 Folders, Fiery Color Profiler Suite v4.0,
 Fiery ES-2000 Spectrophotometer and EFI
 Productivity Pack

Color Management

ICC Profile, Color Chart, CMYK Color

Tools

Reference Pages, RGB Color Tests,
 Trapping Support and ColorWise[®] Pro Tools

Additional Accessories

Banner Paper Guide Tray Type M19, Caster Table Type M3, Bridge Unit BU3070, Cabinet Type F, Camera Direct Print Card Type M19, Card Reader Bracket Type 3352, Extended USB Board Type M19, External Keyboard Bracket Type M19, Fax Connection Unit Type M19, Fax Memory Unit Type M19 64MB, File Format Converter Type M19, G3 Interface Unit Type M19, HotSpot MFP Option Type S, IEEE 802.11a/g/n Interface Unit Type M19, IEEE 1284 Interface Board Type M19, Imageable Area Extension Unit Type M19, Key Counter Bracket Type M3, Memory Unit Type M19 4GB, NFC Card Reader Type M19, OCR Unit Type M13, Optional Counter Interface Unit Type M12, Postscript3 Unit Type M19, Power Filter ESP XG-PCS-15D, Smart Card Reader Built-in Unit Type M19, USB Device Server Option Type M19, XPS Direct Print Option Type M19

¹Either the Cabinet Type F or one of the paper options must be installed.

²Requires configuration with Bridge Unit BU3070.

³Cannot be installed together.

⁴Requires installation of Two-Tray Paper Bank (PB3160) or Tandem Large Capacity Tray (PB3230).

Some options may not be available at the time of market release.

Specifications are subject to change without notice.

For maximum performance and yield, we recommend using genuine Ricoh parts and supplies.

RICOH
 imagine. change.

www.ricoh-usa.com

Ricoh USA, Inc., 70 Valley Stream Parkway, Malvern, PA 19355, 1-800-63-RICOH

Ricoh[®] and the Ricoh logo are registered trademarks of Ricoh Company, Ltd. All other trademarks are the property of their respective owners ©2016. Ricoh USA, Inc. All rights reserved. The content of this document, and the appearance, features and specifications of Ricoh products and services are subject to change from time to time without notice. Products are shown with optional features. While care has been taken to ensure the accuracy of this information, Ricoh makes no representation or warranties about the accuracy, completeness or adequacy of the information contained herein, and shall not be liable for any errors or omissions in these materials. Actual results will vary depending upon use of the products and services, and the conditions and factors affecting performance. The only warranties for Ricoh products and services are as set forth in the express warranty statements accompanying them.

R3620-C1