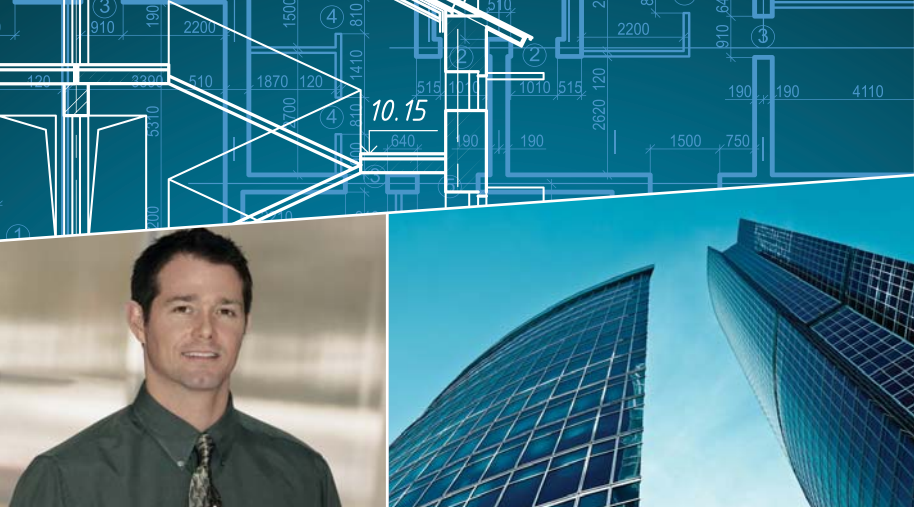


KIP 7100 - ULTIMATE MULTIFUNCTION PERFORMANCE





**ULTIMATE
PRODUCTION
DESIGN**

KIP 7100

Ultimate
MULTIFUNCTION PERFORMANCE



**KIP 7100
PRECISION DESIGN**

**KIP 7100 PRINT
MANAGEMENT SOFTWARE**

**KIP 7100
OPERATIONAL CONVENIENCE**

- Premier Performance & Quality
- Smart Eco² Design
- Color Touch Controls
- 600 x 600 dpi Print, Copy & Scan
- High Definition Print Technology
- 100% Toner Efficient- Zero Waste
- Energy Star Qualified System
- Recycled Paper Approved
- Components 97% Recyclable

- Web Based View & Print
- PC Based View & Print
- PDF & DWF View, Print & Scan
- Color Workflow Integration
- Onscreen Image Preview
- Multi Page File Support
- Windows 7 Certified Driver
- AutoCAD 2011 Driver
- Cost Reporting for all Functions

- Walk-Up Operational Convenience
- Print, Copy & Scan Touch Control
- View & Print Sets from Touch Screen
- Print From / Scan to Integrated USB Port
- Color Scan, View, Print & Copy to Inkjet
- Auto Media Loading with Roll End Caps
- Integrated Top Stacking System
- Direct Prints To Optional Rear Stackers
- On Screen System & Operator Guides

KIP 7100 Production Expandability

The productivity of the KIP 7100 system is designed to satisfy the most demanding needs of decentralized users. The versatile KIP 7100 may also be expanded to provide workgroups with multifunction convenience. KIP 7100 system software is ideal for decentralized environments and expandable to meet the need for centralized printing.

The KIP 7100 provides operators with the flexibility to direct prints and copies to a preferred output destination – the integrated top stacking system and/or to an optional rear KIP stacking system for increased production.

KIP 7100 systems deliver the best of both worlds: walkup convenience and production printing!



**SINGLE FOOTPRINT
INTEGRATED TOP STACKING
FOR DECENTRALIZED
ENVIRONMENTS**



**PRINT & ORIGINAL
STACKING SYSTEM
FOR DEPARTMENTAL
WORKGROUPS**



**HIGH PRODUCTIVITY
STACKING FOR CENTRALIZED
PRINT ENVIRONMENTS**



**MAXIMUM PRODUCTIVITY
FOLDING FOR SEAMLESS
WORKFLOW INTEGRATION**

Ultimate Document Mobility

An integrated USB port provides convenient access to files stored on USB drives for instant viewing & printing of single documents or full collated sets. In addition, originals may be directly scanned to a USB drive in a variety of file types, including multipage PDF, TIF & DWF formats.

- Conveniently integrated with KIP 7100 touchscreen
- Print from & scan to integrated USB port
- Streamlines mark-up document workflow
- Color scan to file & color print to inkjet



KIP 7100 Integrated USB Port

KIP 7100 Precision Imaging

The KIP 7100 delivers fast and accurate copies and prints using toner based imaging technology that produces UV stable prints. 100% toner efficient KIP High Definition Print Technology ensures rich blacks and smooth gradients. Superior 600 x 600 dpi print, copy and scan resolution captures fine details with remarkable tone clarity, keeping reproductions true to the original.

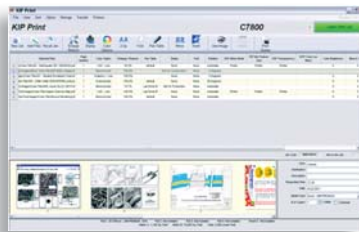


KIP 7100 Total Print MANAGEMENT



KIP Print

KIP Print network printing software is an easy to use application designed to provide operators with a fast and accurate means of producing high quality print sets from all types of wide format digital files. An intuitive ribbon style interface with an emphasis on job building; featuring column browsing, color thumbnail previews and total preflight control. Color and B&W documents are efficiently selected for printing in collated sets with the ability to designate custom output preferences before print submission.



Intuitive New Ribbon Style Interface

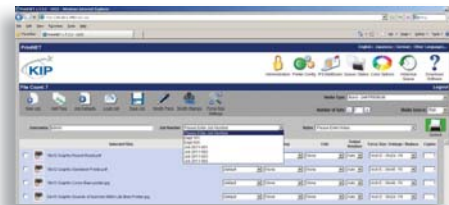
KIP Print Key Features

- New Graphical User Interface
- Easy to use automated installation and setup
- Windows 7 style ribbon bar for easy feature selection
- Thumbnail preview and image size while selecting files
- Graphical choice of predetermined image settings
- force Size scaling to page size and roll width
- Two-Up printing for multicopy nesting
- Output Size updates as scaling is adjusted
- WYSIWYP thumbnail image viewer
- Custom job build columns
- Re-order and set individual settings for multi-page files
- Custom Fold pattern for each file.
- KIP Cost Review Application
- KIP Track System



KIP PrintNET

KIP PrintNET is a true web-based print production tool that delivers powerful color file viewing & printing, job queue management and administration features without the need to install any software applications on network computers. Users may select and send single or multiple files to KIP systems, complete with image adjustments such as scaling, stamping and color management! In addition, KIP PrintNET generates Email reports detailing system usage on demand or at designated intervals.



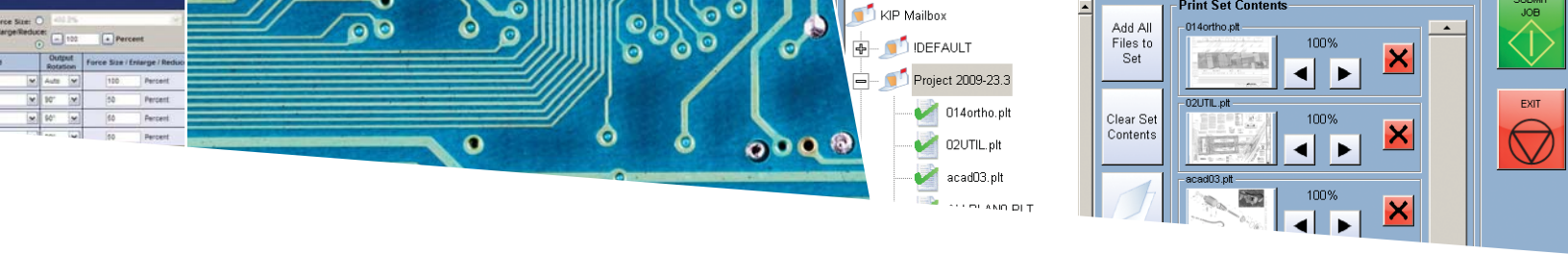
Web Based, Browser Independent



KIP Cloud Printing

Cloud Printing is a convenient, driverless print solution that lets casual users forget that complex front end printer software ever existed. With print job set up and submission via email, users benefit from problem-free remote printing to the mailbox/queue of any KIP printer, or may be configured to bypass the mailbox for immediate output.





Touchscreen PRINTING

KIP 7100 Touchscreen Printing

The KIP 7100 provides the power of touch controls to view, scale, organize and print file sets from USB drives, network locations or mapped CD/DVD drives. Total operator efficiency is achieved through use of the central touchscreen, the intuitive interface that displays all system control settings on one screen to enhance productivity.

View & Print Touch Controls

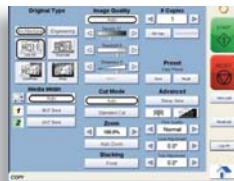
- From integrated USB port
- From network locations
- From mailboxes
- View images prior to printing
- Set number of prints
- Easily resize images
- Simple collation options



Create Print Sets from the Central Touchscreen

Copy & Scan Touch Controls

- Collated sets copying
- Recall, edit & reprint previous jobs
- Set copy & concurrent print
- Convenient quality presets
- Apply digital stamps
- Scan to email and USB drives
- Scan directly to multi-page PDF, TIF or DWF



Intuitive Operations



KIP Color Advanced

Powerful KIP Color Advanced software provides versatile color scan, copy and print applications designed to meet the demands of advanced operators from the KIP 7100 Touchscreen. KIP Color Advanced features powerful color copying and printing to wide format inkjets. Features such as collated set printing and color management provide advanced control over print resources.

KIP Color Advanced Printing:

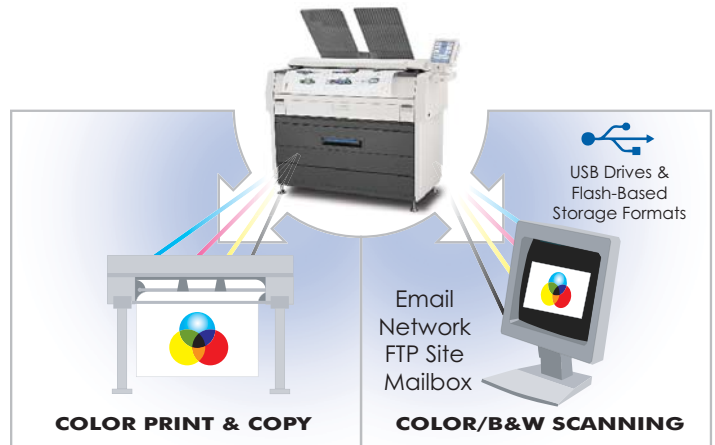
- Integrates with single or multiple printers
- Color RIP system for graphic and technical files

KIP Color Advanced Scanning:

- Supports a full range of color file formats
- Scan to Email, USB drives, mailboxes or network

KIP Color Advanced Copying:

- Copy to one or several printers via network connection
- Nesting, paneling, collated sets printing & cropping



Certified Application Drivers

KIP application drivers support 32 & 64 bit printing features including set collation, fast spooling for multiple copies or sets, data tracking for job accounting & media selection.

- Microsoft Windows 7 Certified 32 & 64 bit print drivers
- Drivers for AutoCAD versions up to 2011
- Citrix ready



KIP Systems and Application Drivers Certifications



MANAGE EVERY TASK **EVERY JOB** MONITOR EVERY TASK **ACCOUNT FOR EVERY USER**

Maximize The Power of The Web to Manage your System

KIP 7100 systems eliminate all barriers to efficient web-based system management. The KIP 7100 integrated PrintNET web server allows users and administrators to effectively communicate from remote locations with an intuitive new icon based interface.



Complete Communications Hub

KIP 7100 systems provide advanced features with simple operation for unequaled wide format performance. KIP 7100 systems are powered by KIP total print management software for superior productivity and the tightest possible integration with existing network infrastructures.

The ability to communicate with inkjet printers and remote workstations increases performance and the power to execute simultaneous copying, printing, and scanning tasks supports multiple users in busy workgroup environments.

- Meets strict security guidelines
- Integrated web server
- On screen system & operator guides
- Print management applications

KIP 7100 system operation is simplified with direct access by the operator to the touchscreen system & operator guides. Remote access to the guides is achieved via KIP PrintNET web solutions.



KIP 7100 On Screen Operator Guides



KIP Cost Review Application

Print costs vary due to toner coverage, media type and system maintenance. These costs are calculated by the KIP Cost Review Application and translated into detailed reports to accurately invoice users, departments, projects or clients. KIP Cost Review Application reports can be delivered via email at or printed on demand.

Standard Reports include:

- Printable Usage Summary
- View Toner Coverage Report
- View Media Details
- View Recent Jobs Report

KIP Track System

When activated, the KIP Track system requires operators to provide username & password information before operating a KIP system. Activity reports can then be generated related to individual users or projects. KIP Track print controls are integrated with the KIP Cost Review Application and included in all KIP print production software applications.

KIP 7100 Versatile System Configurations

The KIP 7100 multifunction system is available in a variety of configurations, providing the versatility to select an initial system with features to suit immediate requirements.

KIP 7100 Feature Access Keycodes

KIP 7100 additional features can be easily implemented via keycode entry at the touchscreen as required.

Distribution	By			Color			Total		
	#	Qt	Fee	#	Qt	Fee	#	Qt	Fee
JOB 100001 CAD PRINTING	0	0	\$0.00	16	114	\$12.94	16	114	\$12.94
JOB 100002 GRAPHICS PRINTING	0	0	\$0.00	16	114	\$15.32	16	114	\$15.32
JOB 100003 CAD PRINTING	0	0	\$0.00	16	114	\$12.94	16	114	\$12.94
JOB 100004 GRAPHICS PRINTING	0	0	\$0.00	16	114	\$15.32	16	114	\$15.32
JOB 100005 CAD PRINTING	0	0	\$0.00	24	162	\$19.35	24	162	\$19.35
JOB 100006 GRAPHICS PRINTING	0	0	\$0.00	16	114	\$15.32	16	114	\$15.32
JOB 100007 CAD PRINTING	0	0	\$0.00	16	114	\$12.94	16	114	\$12.94
JOB 100008 GRAPHICS PRINTING	0	0	\$0.00	16	114	\$15.32	16	114	\$15.32
JOB 100009 CAD PRINTING	0	0	\$0.00	16	114	\$12.94	16	114	\$12.94
JOB 100010 GRAPHICS PRINTING	0	0	\$0.00	16	114	\$15.32	16	114	\$15.32
JOB 100011 CAD PRINTING	0	0	\$0.00	8	66	\$7.53	8	66	\$7.53

KIP Cost Review Application

Username	Project #	Description
B Birt	2009-34709	Birtline
A Faubir	2009-8577	Check Set
B Hines	2009-387	Non-Birtline
B Roberts	2009-388	Not For Production
B Weiss	2009-567	Sample Prints
D Bokeman	2009-4374	Special
J LaRo	2009-7408	
J Wiser	2009-887	
N Harper	2017*41365	
S Jackson	687-9821	

KIP Track Print, Copy & Scan Controls



Reports Delivered Conveniently by Email



KIP Premier Performance & Build Quality

As a world leader in wide format document production technology, KIP is committed to providing the highest value standards by combining the best in hardware and software technology to create superior products at affordable prices. KIP systems are quality engineered for production class operation and reliability. State-of-the-art printing technologies and advanced self diagnostic systems maintain system productivity to ensure maximum uptime.

We differentiate our products by integrating environmental benefits such as energy efficiency, emissions reduction and the ability to recycle supply containers, to deliver an improved operational experience.

BUILT
for the workgroup,
DESIGNED FOR THE
individual.



Smart Eco² Design - Economical & Ecological

The Energy Star[®] qualified KIP 7100 employs adjustable sleep modes to keep power consumption to a minimum while providing fast print times to keep busy workgroups moving. High yielding, 100% efficient high definition toner delivers on the promise of maximum system uptime. In addition, the KIP 7100 features a reduced maintenance cycle to minimize maintenance times. The KIP 7100 is part of KIP's initiative to ease environmental burdens in all stages of a product's life-cycle.



**THE COLOR OF
KIP IS GREEN**



U.S.A. ■ Phone: (800) 252-6793 ■ Email: info@kipamerica.com ■ Website: www.kip.com

CANADA ■ Phone: (800) 653-7552 ■ Email: info@kipcanada.com ■ Website: www.kip.com

KIP and KIP 7100 are registered trademarks of the KIP Group. All product features and specifications are subject to change without notice. Complete product specifications are available upon request.