

**KIP**



*KIP 5000 Series*

**MODULAR, INTEGRATED PRODUCTION SYSTEMS**





*The KIP 5000 series is a range of versatile digital imaging systems designed to provide a combination of peak demand productivity and superior image quality to satisfy demanding document imaging environments.*

*All KIP 5000 systems feature a full suite of state of the art printing, copying and scanning software to ensure excellent performance across all monochrome and color imaging applications.*

*The KIP 5000 is available in three main configurations: KIP 5000 Print System, KIP 5000 Print, Copy & Scan System and KIP 5200 Production System.*

## KIP 5000 SERIES SYSTEMS

### *KIP 5000 Print Systems*

The KIP 5000 network printer is designed to provide a combination of peak demand productivity and superior print quality. The system efficiently produces documents sent via application drivers, network PCs or over the internet. The KIP 5000 meets the toughest printing demands and may be easily upgraded to handle copying and scanning requirements in virtually any digital imaging environment.

### *Key Features*

- Prints 4,2 A0 size sheets per minute at 600 x 600 dpi resolution
- 100 % toner efficient operation from 2 or 4 media rolls
- Integrated touch screen display provides advanced system management
- KIP software and application drivers included with each system



KIP 5000 Print System

### *KIP 5000 Print, Copy and Scan Systems*

The KIP 5000 system performs the full range of monochrome and color scanning applications, providing the capability to scan all types of documents for use at network PCs or copy directly to inkjet printers. In addition, monochrome technical documents containing lines, text, grayscales and graphic images are quickly and accurately printed, copied or scanned by the KIP 5000.

### *Key Features*

- Single, space saving system footprint with no need for additional PCs
- Create color copies directly to inkjet printers
- Scan documents into a wide range of monochrome and color file formats
- Image presets with real time copy and scan previews provide maximum quality control



KIP 5000 Print, Copy and Scan System

## *KIP 5200 Production System*

The KIP 5200 system is a professional grade monochrome print and mono/color copy & scan solution that provides high demand users with the ultimate in imaging technology.

Featuring a full suite of production printing, copying and scanning software, the KIP 5200 system expertly performs all monochrome and color imaging applications. Thanks to a robust document imaging system, complex graphics and photos are reproduced as accurately and efficiently as simple line drawings.

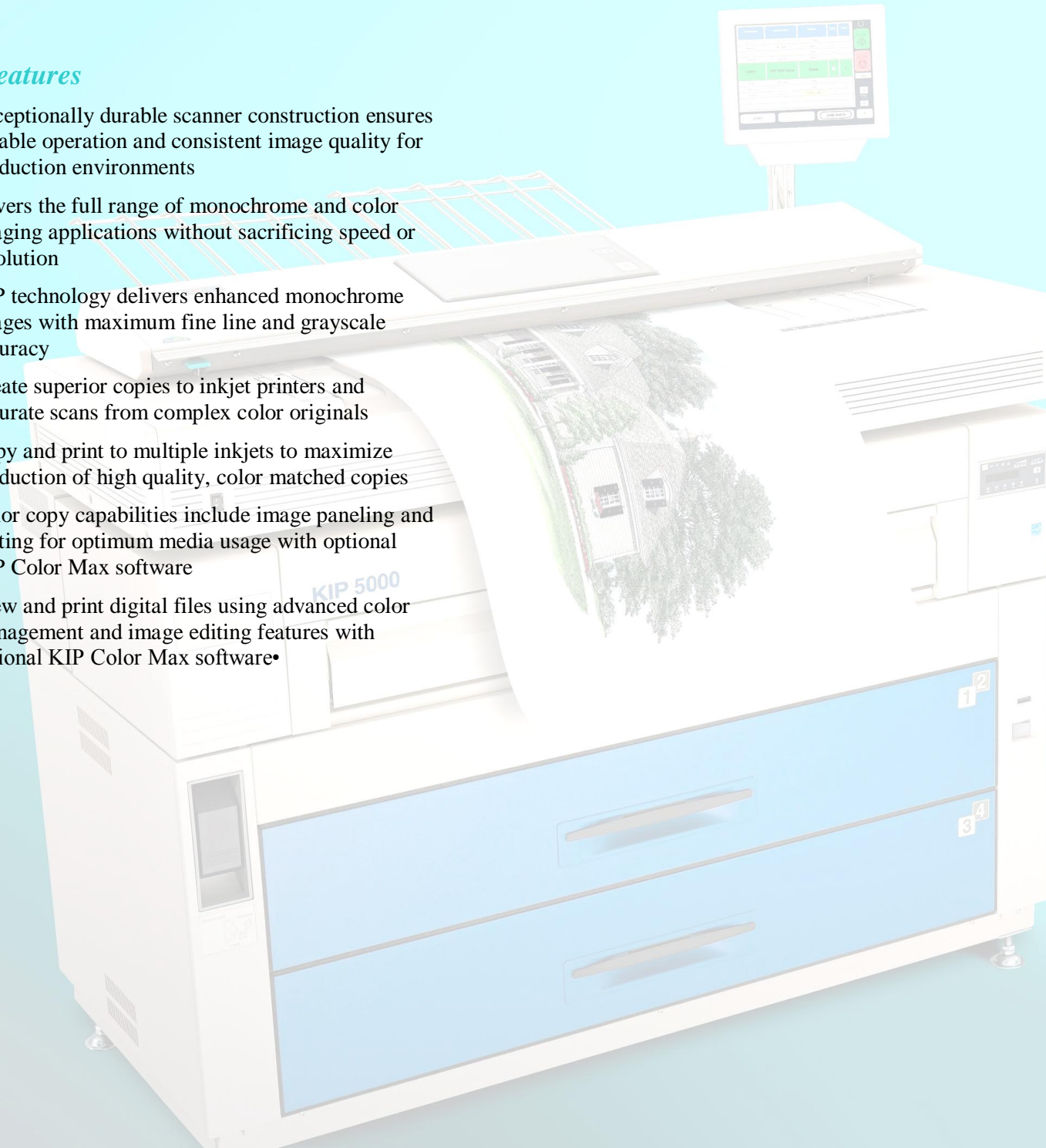
The KIP 5200 system may be configured as a compact integrated system, or split into separate printing and scanning stations for maximum productivity!

## *Key Features*

- Exceptionally durable scanner construction ensures reliable operation and consistent image quality for production environments
- Covers the full range of monochrome and color imaging applications without sacrificing speed or resolution
- KIP technology delivers enhanced monochrome images with maximum fine line and grayscale accuracy
- Create superior copies to inkjet printers and accurate scans from complex color originals
- Copy and print to multiple inkjets to maximize production of high quality, color matched copies
- Color copy capabilities include image paneling and nesting for optimum media usage with optional KIP Color Max software
- View and print digital files using advanced color management and image editing features with optional KIP Color Max software•



*KIP 5200 Modular Production System*

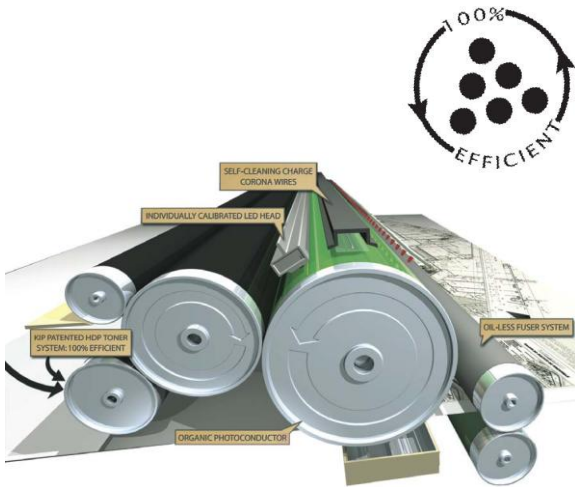




# KIP 5000 PRINT SYSTEM

## *KIP 5000 Printer Features*

- Integrated touch screen operator panel
- 600 x 600 dpi resolution
- Production speed of 4,2 A0 size prints per minute
- 2 or 4 roll upgradeable media capacity
- High definition line quality
- Distinctive greyscales & solid areas
- 100 % toner efficiency
- Expanded duty cycle
- Energy Star qualified
- Environmentally friendly



*KIP High Definition Print Technology delivers crisp line detail, solid blacks and consistent gray scales.*

## *Monochrome Printing*

The KIP 5000 printer is a 600 dpi two or four roll 36" wide format printer with a cut-sheet bypass tray for single prints or copies on specialty media. The KIP 5000 media capacity is field upgradeable, allowing roll drawers to be added according to printing requirements.

The KIP 5000 printer features KIP High Definition Print Technology (HDP) for the highest quality monochrome images. KIP HDP Technology allows the KIP 5000 to reproduce the full spectrum of technical, engineering and architectural documents with complete accuracy and confidence.

## *Image Processing System*

The KIP Image Processing Software suite delivers a wide range of printing benefits; including web-based & network printing, application drivers, automated metering, remote system monitoring and simple user operation.

## *Expandable Technology*

Start with a network printer and add copy and scan capabilities to grow with business demands. The KIP 5000 has been designed to deliver unrivaled quality and flexibility to meet the ever increasing demand for accurate and cost effective wide format document reproduction.



## *KIP 5000 Printer Features*

- Automatic file format detection
- Supports all standard raster and vector formats
- Integrated DWF file format support
- PDF & Postscript file viewing and printing
- Communicate with PCs, print-servers, switching equipment, hubs and other network capable devices
- Windows network connectivity via TCP/IP protocol
- Unix/Linux and Novell network connectivity spooled through LPR/LPD
- Apple network connectivity via LPR/LPD

# KIP 5000 PRINT, COPY AND SCAN SYSTEM



## Monochrome Copying and Scanning

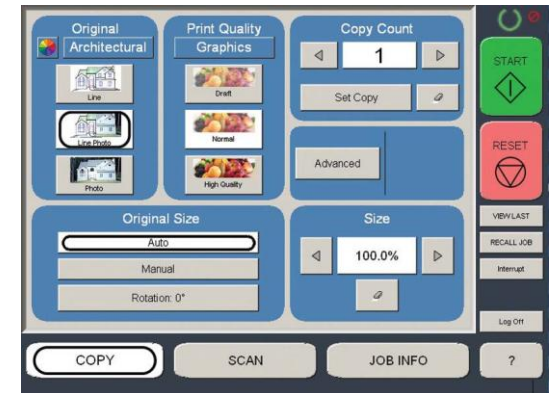
The KIP 5000 system accurately reproduces the full range of monochrome technical drawings, graphic renderings, maps and photographs. A range of convenient preset quality controls are available to assist operators with making proper monochrome imaging adjustments. To ensure maximum clarity, the system dynamically adjusts exposure settings during all monochrome copying and scanning applications.

## Color Scanning

In addition to the full range of monochrome imaging features, the system provides the capability to scan color documents into a variety of high resolution file formats for use at PC workstations. Once scanning is complete, the image files are automatically delivered to the operator's choice of destination; network location, FTP site or personal project inbox.

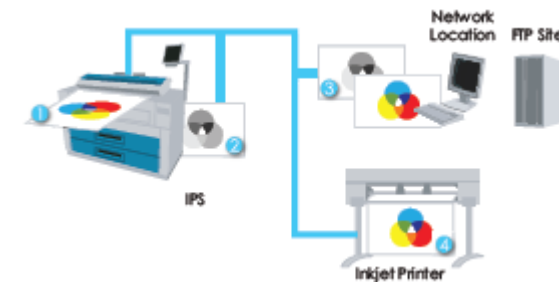
## Color Copying

Fully integrated with a range of inkjet printers, the KIP 5000 print, copy and scan system delivers high quality color copies from all types of original documents. A unique closed-loop color calibration system ensures the highest level of copy accuracy based on the individual color capabilities and characteristics of each inkjet printer.



KIP 5000 Series Copy Interface

## Mono/Color Copying and Scanning



1. Monochrome or color document is inserted into scanner to begin the imaging process
2. Monochrome copies are produced by the KIP 5000 System
3. Monochrome or color scanned image files may be directly transmitted to a specified network location, such as a server or the operator's PC
4. Direct color copies are produced by the inkjet printer

## KIP 5000 System Features

- Space saving single footprint
- The KIP 5000 copies the full range of monochrome originals
- Create copy sets from unlimited number of originals
- Direct color copies to a wide range of inkjet printers
- Closed-loop color calibration system ensures copy accuracy
- Designate image size, rotation and file name
- Preset quality selections for line, line/photo, and photo original types
- Scan to single or multi page TIFF and PDF formats for maximum flexibility

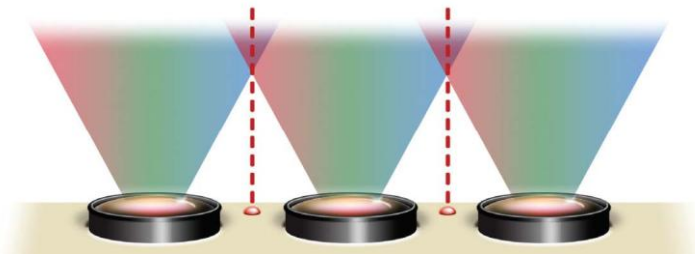
# KIP 5000 MODULAR PRODUCTION SYSTEM

## *Production Imaging*

The KIP 5200 system employs highly advanced imaging technologies to deliver outstanding clarity and maximum production speed. In addition, a uniquely durable design and quality construction ensure reliable operation and consistent quality in high production imaging environments.

## *Key Features*

- True 600 x 600 dpi optical resolution
- 24-bit RGB true color image capture
- Three independent imaging cameras
- KIP Real Time Thresholding technology
- Automatic image despeckling
- Monochrome image background removal
- Self-calibrating maintenance systems
- Advanced laser alignment camera system



*Three independent imaging cameras with an advanced laser alignment system and self-calibrating diagnostics provide an extraordinary level of quality.*

## *Enhanced Monochrome Image Quality*

The KIP 5200 system makes monochrome technical documents look better than ever. Exclusive KIP imaging technology creates crisp, black and white prints, copies and scans from all types of monochrome technical drawings, photographs, maps and graphic renderings.

An advanced grayscale mode captures the full range of gray with no image drop-out or down sampling and is ideal for making accurate photo reproductions on inkjet printers.

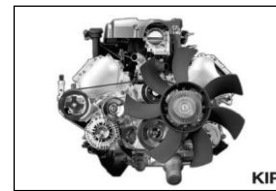
## *World Class Color Quality*

The KIP 5200 system features professional grade, 24-Bit color imaging to ensure the highest quality color photo and graphical reproductions. Create high resolution color copies on inkjet printers, or scan extremely detailed color originals into a variety of file formats appropriate for E-mail, archive and printing purposes.



## *KIP Color Max Software*

This powerful software package delivers advanced copying and scanning features and also includes the ability to RIP files to print. Users may print in monochrome or color to multiple printers, ensuring speed, flexibility and accurate production of high-quality color matched copies. KIP Color Max software provides advanced color management features and professional image editing tools that allow you perform difficult tasks easily and with consistent results from one job to the next.



*The full spectrum of monochrome and color documents can be reproduced with the KIP 5200.*



## Monochrome Imaging

- Monochrome scan speeds up to 240 mm per second
- Stream-feed an unlimited number of originals when producing collated sets
- Create single or multi page digital files; including PDF and DWF
- Preset quality selections for line, grayscale and photo originals
- Copy to multiple KIP printers with KIP Production Software

### KIP 5200 Mono Scan Speed

DPI	Monochrome Scan Speed	
600 x 600	80 mm / sec	4,8 m / min
400 x 400	120 mm / sec	7,2 m / min
300 x 300	160 mm / sec	9,6 m / min
200 x 200	240 mm / sec	14,4 m / min

### KIP 5200 Color Scan Speed

DPI	Color Scan Speed	
600 x 600	35 mm / sec	2,1 m / min
400 x 400	50 mm / sec	3,0 m / min
300 x 300	70 mm / sec	4,2 m / min
200 x 200	85 mm / sec	5,1 m / min

## Color Imaging

- Color scan speeds up to 85 mm per second
- High resolution, 24-Bit color image quality
- Copy directly to inkjet printers or create color digital files
- Easy system calibration process ensures color copy and scan accuracy
- Advanced KIP imaging technologies deliver superior results
- Increase system functionality with KIP Color Max software

### KIP 5000 Series System Configurations



KIP 5200 Mono/Color Print, Copy & Scan System



KIP 5200 Modular Production System with KIP Color Max Software

## KIP Color MAX Imaging Features

- Advanced Color Management
- Custom Quality Filters
- Multiple Inkjet Integration
- Image Nesting
- Image Editor
- Print to Inkjet (RIP)
- Print Collated Color Sets
- Image Deskew
- Image Despeckle
- Area Crop
- Wipeout / Mask
- Scan to E-mail
- Print and Copy Paneling
- Spectrophotometer Support



KIP Color Max provides advanced copying, scanning and printing of all monochrome and color documents

# KIP 5000 SERIES WEB BASED AND NETWORK PRINTING



## KIP PrintNET

KIP PrintNET is a powerful web-based utility that benefits users with versatile printing, job queue management and system administration features without the need to install any software applications on network PCs. Users may select and send single or multiple files to KIP digital systems connected to the local network or available to internet users.

In addition, KIP PrintNET generates customizable E-mail reports detailing all KIP 5000 system usage on demand or at preset intervals. These reports contain data compatible with spreadsheet applications for easy customization and analysis.

## PrintNET Key Features

- Create print jobs from Windows, Apple, Novell and Unix/Linux based web browsers
- Recall, edit and reprint previous jobs
- Create new sets or add files to existing jobs
- User name and password security system
- E-mail notification can be sent to users upon print job receipt
- Configure printer settings such as image adjustments, media types and print density
- Queue management and system setting adjustments are restricted to administrator use

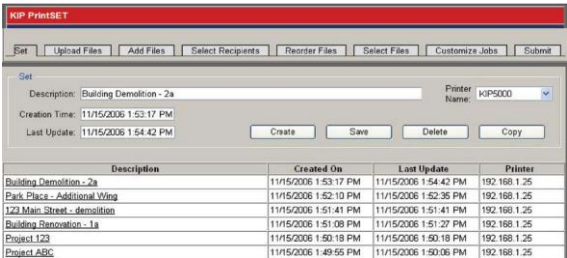
## KIP PrintSET

KIP PrintSET is a powerful set printing and management application designed for any company with a repository of files that require printing for distribution to more than one party. KIP PrintSET gives operators the ability to easily build custom sets of prints for multiple recipients.

Each recipient may request custom zoom settings, media types and number of copies. Upon completion, each printed set can be billed to a specific project, person or department. Jobs are automatically saved for later submittal and may be edited to allow for adding or deleting files or recipients.

## PrintSET Key Features

- Upload image files to a central repository for easy access
- Maximum print distribution versatility
- Arrange files by discipline, file type, size or modified date
- Accurate individual, departmental and project specific accounting information
- Customize individual print files for each recipient
- Complete jobs with distribution information are saved for future use



Use KIP PrintSET to print and manage sets.



Create jobs with KIP PrintNET.



Reprioritize and remove print jobs with the menu-driven queue manager.

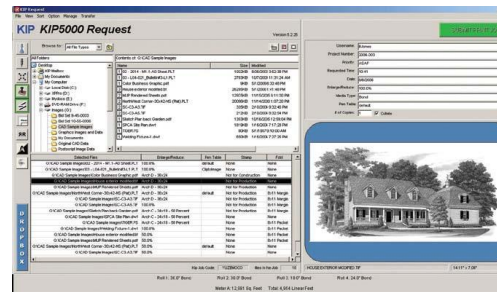


## KIP Request

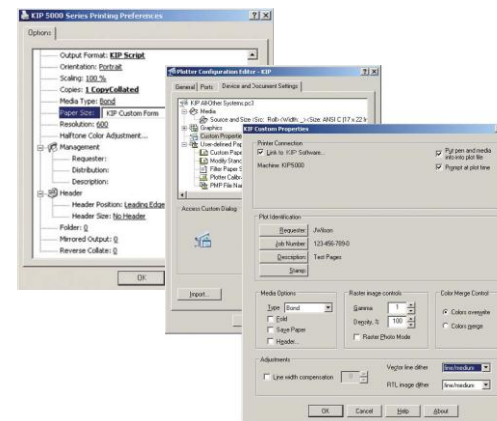
KIP Request network printing software is an easy to use printing application designed to provide network users with a fast and accurate means of producing high quality prints from all types of file formats. Every aspect of KIP Request is centered on efficient workflow, providing complete command of a host of powerful printing and print management features. Users may preview print jobs, make image adjustments, set document folding parameters, enter accounting data, manage the print queue and send files to various KIP printers on the network via a single interface.

## Request Key Features

- Automatic file format detection
- Standard raster and vector file format support
- Integrated image viewer
- User name and password security system
- Powerful print tracking and job accounting tools
- Fast file processing for maximum productivity
- Individual print rotation within a collated set
- Advanced folding features



KIP Request user interface



Windows and AutoCAD Drivers



Windows and AutoCAD Drivers

## KIP Windows Driver Features

- Intelligent, 2-way communication with KIP 5200 system
- Displays current media information and real time system status
- Print in monochrome and grayscale
- 100, 200, 400 and 600 dpi selection
- Selection of folding parameters
- 64-bit operating system compatibility
- 1 - 999 copies or collated sets
- Label documents with user name, job number and data tracking information
- Job accounting and data tracking includes user name, job number and data tracking information
- Print from design, project management and markup applications

## KIP AutoCAD Driver Features

- ADI and HDI drivers for AutoCAD
- Displays current media information and real time system status
- Raster image control to adjust gamma and density levels for embedded raster data
- Data tracking for job accounting including user name, job number, and description fields
- User and job number passwords may be required before printing
- Select bond, vellum, film or custom media
- Image stamping allows placement of text and/or stored images anywhere on the document

# KIP 5000 SERIES SYSTEMS OPERATIONS

## KIP IPS

The KIP Image Processing System is a combination of processing power and flexible software applications designed for maximum productivity and ease-of-use. Applications are available on PC workstations, over the internet and at the KIP 5000 touch screen operator panel, providing a uniform user interface across the entire KIP digital product range.

All applications have been designed to provide exceptional versatility, fast file processing and efficient use of network resources to maintain high productivity.

## Automated Metering System

All KIP printing, copying, and scanning applications are connected via an integrated system designed to record and account the use of all system functions. Customizable reports detailing total system usage are delivered via E-mail on demand or at designated intervals.

## Easy Administration

In addition to the thoughtfully designed interface, users and administrators benefit from an array of sophisticated, easy-to-use queue management and accounting tools designed to meet today's most challenging network security demands.

## Information Center

The KIP 5000 is configured to display contact information specific to the KIP authorized service provider. This feature is designed to assist operators when requesting consumables, service calls and system upgrades.

## System Guides

The KIP 5000 operator panel displays illustrated guides to explain system operations including mono/color copy and scan-to-file functions. In addition, step-by-step media and toner replacement procedures are automatically displayed when necessary to provide users with system instructions.

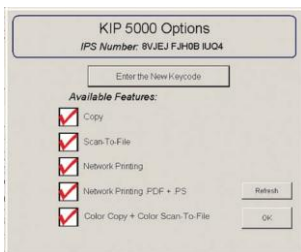
The KIP System Guide is available at the KIP 5000 operator panel and downloadable via KIP PrintNET to assist operators by providing a quick reference resource for all KIP application features.

## System Upgrades

All KIP 5000 configurations are available as two or four roll systems. Each configuration may be easily field upgraded to provide new system features at any time, including mono/color scan-to-file and copy



KIP 5000 Series touch screen interface



Instant keycode upgrades



Easy to understand illustrated operator guides

## *KIPFold 5000*

The KIPFold 5000 system automates document finishing requirements by providing folding, stacking and collation in a compact design. The system intelligently communicates with the KIP 5000 IPS and is fully integrated with all KIP copying and printing applications and drivers to provide seamless workflow integration.

The KIPFold 5000 provides the flexibility to fold copies and prints into all architectural, engineering and metric standard packet sizes. Prints are accepted in either landscape or portrait format, allowing for fast and efficient folding operations.

## *KIP Stacking Solutions*

The KIP 5000 is compatible with a range of stacking solutions designed to deliver print output just the way you want it. Consistent, accurate and reliable KIP stackers deliver maximum document control with minimum effort. From simple print catchers to intelligent online stacking systems, KIP solutions can be easily tailored to suit your exact needs, while maintaining the flexibility to grow as demands increase.

## *KIP 5000 Series Specifications*

### **PRINTING METHOD**

LED Technology with HDP +

### **PHOTORECEPTOR**

Organic Photoconductive Drum

### **PRINT SPEED**

4,2 A0 per minute

### **RESOLUTION**

600 x 600 dpi

### **MEDIA SIZE**

Max Print Width: 91,4 cm

Min Print Width: 29,7 cm

### **MEDIA WEIGHT**

Plain Paper: 64 – 80 g/m<sup>2</sup>

Tracing Paper: 80 g/m<sup>2</sup>, Film: 3.5 - 4 mil

### **WEIGHT**

240 kg (4 roll)

### **DEVELOPMENT METHOD**

Dry, non-magnetic mono-component toner

### **INPUT POWER**

230 V, 50/60 Hz, 20 A

### **DIMENSIONS (printer)**

137 cm (W) x 69 cm (D) x 89 cm (H)

### **ENVIRONMENTAL RATING**

Energy Star Qualified

## *PRINT LANGUAGES: supported data formats include:*

DWF - TIFF Group 4, Cals Group 4, Intergraph CIT/TG4, IBM IOCA, JPG, Uncompressed Grayscale TIFF, Uncompressed Color TIFF, HPGL, HPGL/2, Calcomp 906/907, HP-RTL - Optional: PDF/PS3, CGM



*KIP 200 Stacker stacks  
350 A4-A0 size prints*



*K 54 Stacker stacks  
1000 A4-A0 size prints*



## KIP 5000 Series System Configurations

### KIP 5000 PRINT SYSTEM

	Standard	Optional
Mono Printing	•	
PDF Printing		•
Folding		•

### KIP 5000 PRINT, COPY AND SCAN SYSTEM

	Standard	Optional
Mono Printing	•	
Mono Copy	•	
Mono Scan	•	
Color Copy		•
Color Scan		•
PDF Printing		•
Folding		•



*KIP 5000 Systems*

### KIP 5200 MONOCHROME PRINT, COPY & SCAN SYSTEM

	Standard	Optional
Mono Printing	•	
Mono Copy	•	
Mono Scan	•	
Color Copy & Scan		•
PDF Printing		•
Folding		•
KIP Color MAX		•

### KIP 5200 MONO/COLOR PRINT, COPY & SCAN SYSTEM

	Standard	Optional
Mono Printing	•	
Mono Copy	•	
Mono Scan	•	
Color Copy & Scan	•	
PDF Printing		•
Folding		•
KIP Color MAX		•



*KIP 5200 Systems*

# KIP

**ASSY Electronic Ltd**

H-2120 Dunakeszi, Fenyves u. 11.

Tel: +36 (27) 543-460

Fax: +36 (27) 543-461

Email: [info@kipplotter.hu](mailto:info@kipplotter.hu)

Web: [www.kipplotter.hu](http://www.kipplotter.hu)

[www.kipprinter.hu](http://www.kipprinter.hu)

KIP and KIP 5000 are registered trademarks of KIP. All other product names mentioned herein are trademarks of their respective companies.

All product features and specifications are subject to change without notice. Complete product specifications are available upon request.