



KIP 3100 SERIES



# KIP 3100

THE KIP 3100 IS A POWERFUL NEW TOUCH SCREEN BASED WIDE FORMAT DIGITAL SYSTEM DESIGNED TO PROVIDE A COMBINATION OF HIGH PRODUCTIVITY AND SUPERIOR IMAGE QUALITY.

TO SATISFY THE DIVERSE REQUIREMENTS OF DECENTRALIZED TECHNICAL DOCUMENT ENVIRONMENTS, KIP 3100 SYSTEMS DELIVER MONOCHROME PRINTING, COPYING & SCANNING, MONO/COLOR SCANNING AND COLOR COPYING TO INTEGRATED INKJET PRINTERS.



## KIP 3100 Monochrome Print, Copy & Scan

The KIP 3100 system accurately reproduces technical documents at true 600 x 600 dpi resolution. Prints and copies may be delivered to the integrated front stacker or directed to a range of rear KIP stacking systems. Media capacity consists of one or two roll drawers, plus a manual bypass for copies onto single sheets of media.

The integrated KIP 3100 copy/scan unit delivers maximum digital imaging quality and performance while reducing the total system footprint. Grayscale areas are accurately reproduced by processing all three channels of RGB image data to accentuate tonal differences and enhance fine details. The system automatically senses the original document width and dynamically adjusts exposure settings during the scanning process for maximum image accuracy. Documents containing lines, text, grayscales, renderings and aerial photographs are easily copied or scanned into a variety of formats including single or multi-page PDF and DWF files.

**Monochrome Print Features:** ■ True 600 dpi print resolution ■ Produces 6 'D', A1 size prints or copies per minute ■ 100% efficient—No waste toner

**Monochrome Copy Features:** ■ Touch screen operator panel provides one-touch access to all copying features ■ Produce collated sets of an unlimited number of monochrome originals ■ Real time preview provides operators with instant copy quality assurance

**Monochrome Scan Features:** ■ KIP 3100 delivers production scanning speeds up to 7.7" per second ■ Scanned images are saved to network location, FTP site or personal/project inbox ■ Scan to a variety of file formats including single or multi-page PDF & DWF

### KIP 3100 Color Copy & Scan

The KIP 3100 may be used to create high resolution color scans and full color copies to a wide range of integrated inkjet printers. True 600 dpi, 24-bit color imaging technology and a unique closed-loop calibration system combine to ensure maximum color accuracy for outstanding copy and scan quality.

The KIP 3100 provides the capability to scan full color technical documents, maps, posters and photos into a variety of file formats for E-mail, archive and print purposes. In addition, the KIP 3100 creates color copies to integrated inkjet printers, ensuring speed, flexibility and accurate production of color matched documents.

**Color Copy Features:**

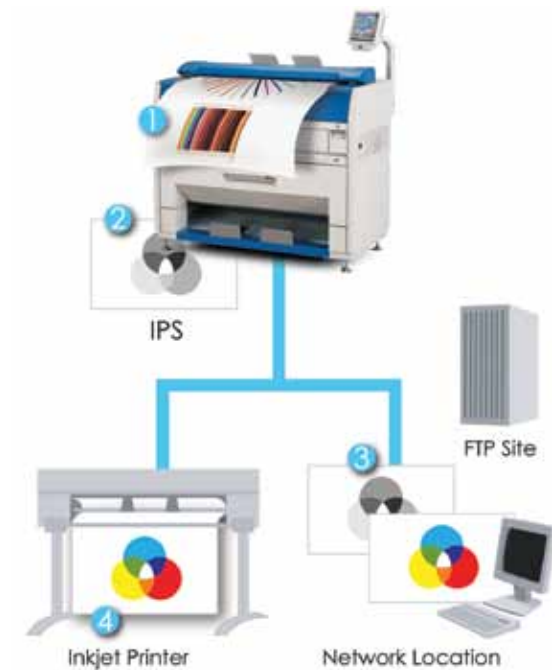
- Full integration with a wide range of inkjet printers
- Automatic quality presets ensure top quality copies and scans with minimal operator effort
- Unique KIP closed-loop color calibration system ensures maximum color copy accuracy

**Color Scan Features:**

- Fully integrated system design eliminates the need for additional PCs
- Color scan speed up to 2.6" per second
- Scan to network location as TIF, PDF or E-mail-ready JPEG

### KIP 3100 Imaging Workflow

- 1 Document is inserted into KIP 3100 copy/scan unit to begin the imaging process
- 2 Monochrome copies are produced by KIP 3100 System
- 3 Monochrome or color documents are scanned to network locations or FTP sites
- 4 Direct color copies are produced by integrated inkjet printer





## KIP 3100 SERIES IPS SOFTWARE SUITE

### KIP Image Processing Software Suite



The KIP Image Processing System is a combination of processing power and flexible software applications designed for maximum productivity and ease-of-use. Applications are available on PC workstations, over the internet and at the KIP 3100 touch screen operator panel, providing a uniform user interface across the entire KIP digital product range. All applications have been designed to provide exceptional versatility, fast file processing and efficient use of network resources to maintain high productivity.

### KIP PrintNET



KIP PrintNET is a true web-based print utility that benefits users with versatile viewing, printing, job queue management and system administration features without the need to install any software applications on network PCs. Users may select and send single or multiple files to KIP digital systems via a local network or the internet. In addition, KIP PrintNET generates customizable E-mail reports detailing all system usage on demand or at preset intervals. These reports contain data compatible with spreadsheet applications for easy customization and analysis.

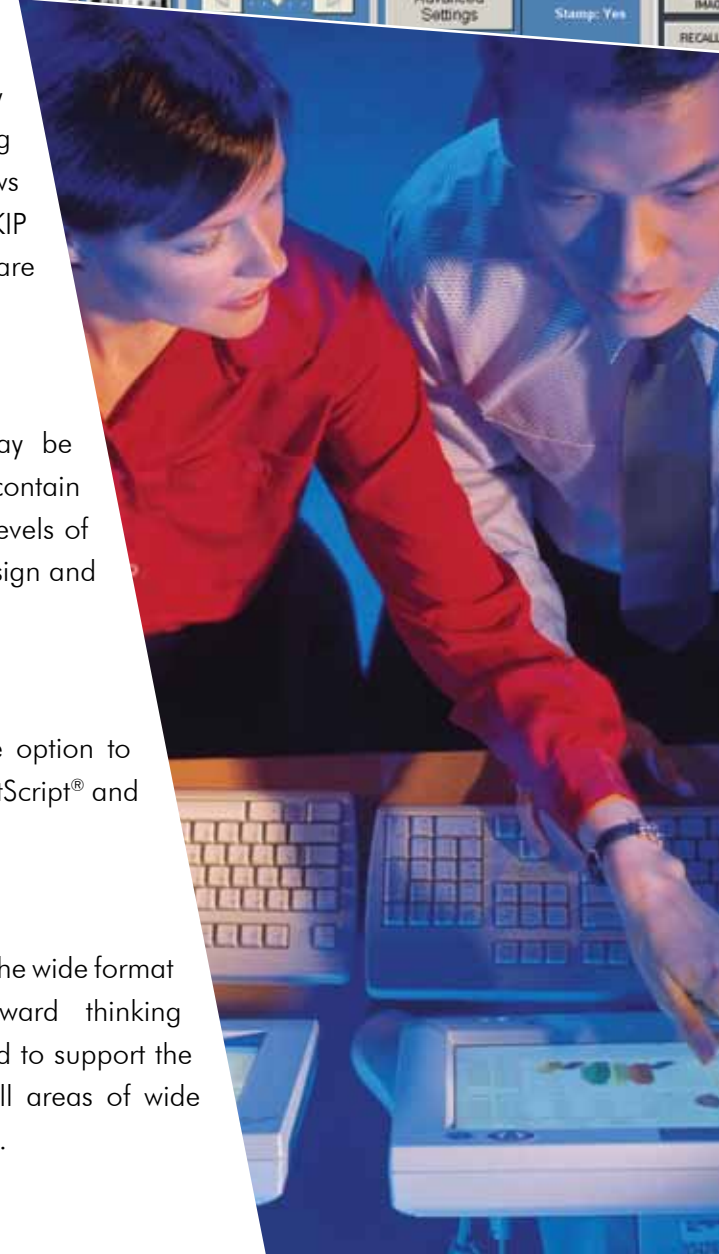
### KIP IPS SOFTWARE IS POWER AT YOUR FINGERTIPS!

The KIP 3100 touch screen interface has been designed to provide decentralized print environments with a powerful combination of versatility and ease-of-use. Every aspect of the interface is centered on the way the operator wants to work, delivering complete control of powerful imaging tools. Each function of the KIP 3100 is accessible at a touch, with dedicated application screens that provide operator authorization and controls for digital system functions.



*Integrated and Powerful Wide Format Imaging Software*

**KIP PrintNET Key Features:** ■ The integrated PrintNET viewer displays accurate graphics, photos and fine lines ■ Create print jobs from Windows, Apple, Novell and Unix/Linux based web browsers ■ User name and password authentication system designed for maximum network security ■ Apply printing preferences on a per-file basis or to a complete print job ■ Accurate individual, departmental and project specific accounting information ■ Operates in mixed environments of client PC operating systems



KIP Request



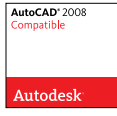
KIP Request network printing software is an easy-to-use application designed to provide network users with a fast and accurate means of producing high quality prints from all types of file formats. Every aspect of KIP Request is centered on efficient workflow, providing complete command of a host of powerful printing and print management tools. Users may preview print jobs, make image adjustments, set document folding parameters, enter accounting data, manage the print queue and send files to various KIP printers on the network via a single interface.

Microsoft Certified KIP Windows® Driver



The KIP Windows driver is WHQL certified for 64 and 32 bit Windows Vista, XP and Server 2003, meaning the KIP Windows driver meets explicit standards of reliability and quality. The KIP Windows driver has been tested and proven to deliver a superior experience when running a PC with Microsoft Windows operating systems.

AutoCAD® Driver



KIP AutoCAD driver enables printing directly from AutoCAD applications. To assist in making printing decisions, two-way printer status allows users to view media information and system status. The KIP AutoCAD driver is compatible with AutoCAD software versions 2004 and up.

DWF File Processing



The DWF® file format from Autodesk may be quickly printed by the KIP 3100. DWF files contain dynamic information to ensure the highest levels of productivity and print quality to the complete cycle of design and construction documentation.

Postscript & PDF File Processing



The KIP 3100 provides operators with the option to quickly and effectively interpret complex PostScript® and PDF® files into wide format prints.

Integrated Workflow Solutions



KIP has developed vendor associations in the wide format printing industry with innovative, forward thinking providers of software solutions. Optimized to support the KIP 3100, these integrated workflow solutions cover all areas of wide format document production and workflow management.



### Easy Administration

In addition to the thoughtfully designed interface, users and administrators benefit from an array of sophisticated, easy-to-use queue management and accounting tools designed to meet today's most challenging network security demands.



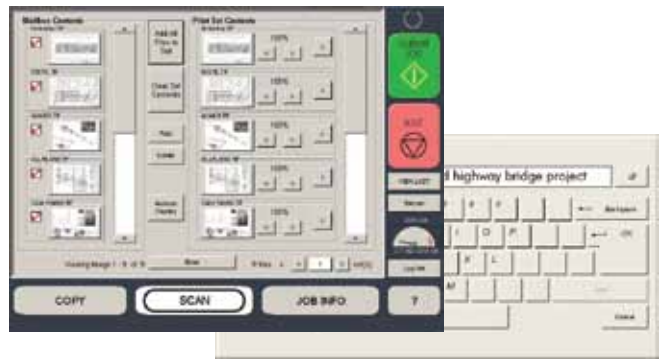
## KIP 3100 SERIES SYSTEM OPERATIONS

### Mailbox Command Center

The Mailbox Quick Printing feature provides a convenient way to produce single or multiple copies of scanned images directly from the IPS touch screen display. In addition, Mailbox Quick Naming allows operators to use the touch screen to name images as they are scanned to file, maximizing workflow potential.

**Quick Printing Features:** ■ Produce individual images or collated sets ■ Set the number of copies to be printed ■ Apply image scaling routines such as 50%, 150%, etc.

**Quick Naming Features:** ■ Maximizes scanning efficiency ■ Reduces possibility of operator error and lost files ■ On-screen keyboard eliminates need for additional PC hardware



### Automated Metering System

All KIP printing, copying, and scanning applications are connected via an integrated system designed to record and account the use of all system functions. Customizable reports detailing total system usage are delivered via E-mail on demand or at designated intervals.

### Information Center

The KIP 3100 is configured to display contact information specific to the KIP authorized service provider. This feature is designed to assist operators when requesting consumables, service calls and system upgrades.

### System Upgrades

All KIP 3100 configurations are available as one or two systems. Each configuration may be easily field upgraded to provide new system features at any time, including mono/color scan-to-file and copy.

### System Guides

The KIP 3100 operator panel displays illustrated guides to explain system operations including mono/color copy and scan-to-file functions. In addition, step-by-step media and toner replacement procedures are automatically displayed.



### KIPFold 3100

The KIPFold 3100 system automates document finishing requirements by providing folding, stacking and collation in a compact design. The system intelligently communicates with the KIP 3100 IPS and is fully integrated with all KIP copying and printing applications and drivers to provide seamless workflow integration. The KIPFold 3100 provides the flexibility to fold copies and prints into all architectural, engineering and metric standard packet sizes

### KIP Stacking Solutions

The KIP 3100 features an integrated front print & copy stacker and is compatible with a range of rear stacking solutions designed to deliver print output just the way you want it. Consistent, accurate and reliable KIP stackers deliver maximum document control with minimum effort. From simple print catchers to intelligent online stacking systems, KIP solutions can be easily tailored to suit your exact needs, while maintaining the flexibility to grow as demands increase.

### Standard Stacking Solutions:



*Integrated Front Print & Copy Delivery*

### Optional Stacking Solutions:



*KIP Print Receiving Rack  
Stacks up to 100 A-E size  
prints/copies*



*KIP Print & Original Stacking System  
Stacks up to 100 A-E size  
prints/copies & 50 originals*



*KIP 300 Stacker  
Stacks up to 350 A-E size  
prints/copies*



*KIP 1200 Stacker  
Stacks up to 1000 A-E size  
prints/copies*

## KIP 3100 SERIES SYSTEM CONFIGURATIONS

### KIP 3100 Copy System

	Standard	Optional
Mono Copying	•	
Folding		•

### KIP 3100 Copy & Print System

	Standard	Optional
Mono Copy	•	
Mono Printing	•	
PDF Printing		•
Folding		•

### KIP 3100 Copy, Print & Scan System

	Standard	Optional
Mono Copy	•	
Mono Printing	•	
Mono Scan	•	
PDF Printing		•
Folding		•

### KIP 3100 Mono/Color Copy, Print & Scan System

	Standard	Optional
Mono Copy	•	
Mono Printing	•	
Mono Scan	•	
Color Copy & Scan	•	
PDF Printing		•
Folding		•

### Engineered for Sustainability

KIP is committed to product designs that promote environmental health and sustainability. Our goal is to consistently improve and refine the technologies in KIP products that keep our planet green.

KIP Printers and Systems Feature These Earth Conscientious Aspects: ■ Energy Star Qualified ■ ROHS Compliancy ■ ISO 14001 Standards ■ Ozone Emissions Filters ■ UL/UL-C Approved ■ 100% Toner Efficiency—No Waste Toner ■ Organic, Recyclable Photoreceptors ■ Recyclable Toner Containers ■ Prints on Recycled Paper ■ Automatic Image Rotation and Media Selection Ensure Minimal Paper Waste



**ISO 14001  
Certified**



U.S.A. ■ (800) 252-6793 ■ [info@kipamerica.com](mailto:info@kipamerica.com) ■ [www.kipamerica.com](http://www.kipamerica.com)  
 CANADA ■ (800) 653-7552 ■ [info@kipcanada.com](mailto:info@kipcanada.com) ■ [www.kipcanada.com](http://www.kipcanada.com)

KIP and KIP 3100 are registered trademarks of the KIP Group. All other product names mentioned herein are trademarks of their respective companies. All product features and specifications are subject to change without notice. Complete product specifications are available upon request.